

H. H. Hunnewell Estate
Wellesley, Massachusetts

Catalog of Stereo Views
1860s–1910

Version 4

James A. Luedke, Jr.

This catalog lists all known period stereographs, or 3-D photographs, of the H. H. Hunnewell estate, Wellesley, Massachusetts, issued from the 1860s to 1910. Discounting reissues, there are 228 different images by 38 identified publishers, and an indeterminate number of anonymous makers. Most of the views were sold commercially. The Hunnewell estate is believed to be the second-most stereographed private estate in America in the 19th century. The first is William Emerson Baker's Ridge Hill Farms, an estate and public attraction located mostly in adjacent Needham, Massachusetts, with a small part in Wellesley.

Stereo views are taken with a camera with two lenses, capturing the scene from slightly different angles. The two images are viewed side-by-side in a stereo viewer, or stereoscope, in which the images merge into a realistic 3D image. The most common stereo medium was a cardboard mount about 7" wide by 3½" high, issued worldwide from the 1850s well into the 20th century. Until about 1910 they were a popular medium for mass-marketing images of interest to the public. Subjects included cities, historic sites, attractions, famous people, sentimental scenes, etc.

The Hunnewell estate was founded in 1852 by Horatio Hollis Hunnewell (1810–1902) and his spouse Isabella Pratt Welles Hunnewell (1812–1888). Hunnewell, who went formally by H. H. Hunnewell and familiarly by his middle name, Hollis, was a Paris- and Boston-based banker, railroad investor, real estate owner, philanthropist, and amateur horticulturist. The couple lived in Boston. Their summer estate, in the 19th century called Wellesley, was in West Needham, a precinct of the present town of Needham, a suburb of Boston. In 1881 West Needham broke from Needham and became the present town of Wellesley, which purportedly took its name in honor of H. H. Hunnewell, the town's greatest benefactor. Still owned by descendants of H. H. and Isabella, the estate is the centerpiece of the U.S. Hunnewell Estates Historic District, created in 1988 and incorporating the homes and lands of the present-day Hunnewells in Wellesley and adjacent Natick, Massachusetts.

The earliest known stereograph of a Hunnewell subject is an amateur view, known only in a copy photograph, of the estate's residence, called the mansion house, which is still the estate's main residence today. The original view was made in or before 1866 and its whereabouts is unknown.

The most prolific photographer of the estate, stereo and otherwise, was Boston-area entrepreneur Chandler Seaver, Jr. (1824–1902), who took 89 stereo views about the early 1870s. Born in Colrain in western Massachusetts, he came to Boston and by 1860 was working as a daguerreotypist. Daguerreotypes were the world's first widely available photograph technology. Later he lived and worked in West Needham, Pittsfield, West Newton (part of Newton), and Hyannis (part of Barnstable, on Cape Cod), all in Massachusetts. He also traveled the eastern United States, taking stereo views. He is well known for his views in Florida and Georgia. Seaver is the earliest photographer known to live in West Needham, starting around 1863; and the first one known to have a business address there, starting perhaps about 1880. The second-most prolific stereographers of the Hunnewell estate are the Kilburn brothers of Littleton, New Hampshire, who published 43 views in the 1880s and 1890s. Kilburn published the only known stereo view showing H. H. Hunnewell himself (catalog number 153).

All of Seaver's Hunnewell stereos are believed to have been printed and published by Charles Pollock (1828–1900), a leading 19th-century Boston photograph printer and publisher. In that era, photographers too small-time, or too busy traveling the country making views, employed firms like Pollock's to print, publish, and market them. Often firms like Pollock's owned the copyright too. Firms like Pollock's and the Kilburns were vertically integrated, with assembly-line facilities where employees made prints by sunlight, cut the prints, and mounted them.

Stereo publishers often sold their negatives to other publishers too. Hence, many stereos, after they were first issued, were reissued later by the original maker or, more often, by another publisher. Nineteenth-century U.S. copyright laws and their enforcement being lax, they were also reissued by *pirate* makers, who re-photographed original makers' cards and resold them illegitimately. All the known Hunnewell reissues and pirates are cataloged herein.

The first stereos of the Hunnewell estate appeared in the mid-1860s. At that time, cards measured about 7 inches wide by 3 to 3¼ inches high. By the 1870s, slightly larger cards of about 7 inches by 3½ inches became the world standard. Almost all the Hunnewell views are in this size. On earlier stereo cards, the two photographs are printed side-by-side on separate pieces of photographic paper, glued to the card. Later, especially with reissues, both photos were printed on a single piece of photographic paper. By the 1880s, curved cards—manufactured with a concave bend from top to bottom—were introduced. The claimed reason is that the curve heightened the stereo effect, and reduced glare on the glossy photos. Other card characteristics—maker's name, subject caption, card color, hand coloring of the photographs, etc.—are identified in section *Stereo Card Descriptor Code*, starting on page 7.

Late in the stereo era, cheaper, thin, halftone lithograph stereo cards, with the images printed directly on the card, emerged. They are usually colorized; black-and-white litho stereos are far less common. Lithograph cards were issued in great numbers, sometimes given away as prizes in breakfast cereal boxes. John Waldsmith says they were issued from about the mid-1890s to about 1915. There is no known lithographic stereo of the Hunnewell estate. For that matter, no known foreign-published stereo view of the Hunnewell estate has surfaced.

A once internationally known feature of the H. H. Hunnewell estate is the Italian garden, an array of terraces on a slope along adjacent Lake Waban, laid out in imitation of gardens in Italy. It features *topiary* conifer trees, cultivated into fanciful shapes. The garden, started about 1851, is one of the oldest, if not oldest, of its kind in the nation. It is still prominently visible today across Lake Waban from Wellesley College. Of the 228 different images seen in the 288 stereo view issues of the estate, 143 show the Italian garden.

Data for this catalog have been gathered since 1974. The compiler thanks Ron Polito, editor and co-compiler of *A Directory of Massachusetts Photographers, 1839–1900*, and David E. Dusenbury, horticulturist and superintendent of the H. H. Hunnewell estate, for their deep and continued assistance with this project.

Similar and Misidentified Views

For the user's information, this catalog also lists a few stereo views looking like the Hunnewell estate, but which are uncertain. These are listed without a catalog number. There are also two misidentified views, Hunnewell estate views wrongly identified as a subject somewhere else (catalog nos. 87 and 107).

Occasionally, stereo views of other estates mis-identified as the Hunnewell estate by photo dealers are occasionally seen, e.g., on eBay. The most frequent seem to be one or two uncaptioned views in Charles Pollock's *Vicinity of Boston—Park and Garden Series*.

What's New in This Version

Since Version 3, three entries have been added to the catalog, bringing the total number of entries to 288. The new entries are interfiled in the proper location in the catalog, thereby requiring a catalog number with a letter prefix. The new entries are catalog numbers 127A, 158A, and 199A. Version 5 also incorporates a few minor formatting changes for easier readability.

Sources

In the catalog which follows, sources illustrating Hunnewell estate views are marked "S" for stereo views, "P" for single (non-stereo) photographs, and "N" for non-photographic images (engravings, etc.). "◇" denotes works shown online as follows:

- ◇HT HathiTrust, *hathitrust.org*
- ◇IA Internet Archive, *archive.org*
- ◇IA-B Internet Archive, "borrow" mode. Free; email & password required.
- ◇X Not online

- P Bacon, Edwin M. "Country Seat of Mr. H. H. Hunnewell." *Picturesque and Architectural New England*. 1899. v2, *Picturesque Massachusetts* (Edward Everett Hale, ed.), pp. 56–63. Boston, ◇IA.
Darrah, William Culp. *The World of Stereographs*. 2nd ed. Gettysburg PA, 1977, ◇IA-B.
- N Downing, Andrew Jackson. *A Treatise on the Theory and Practice of Landscape Gardening, Adapted to North America: With a View to the Improvement of Country Residences...* (etc.). 6th ed. NYC, 1859.
Supplement by Henry Winthrop Sargent, section II, "How to Make a Country Place." Plate III, overleaf of p.444; plate IV, overleaf of p.448; plate V, overleaf of p.452. ◇HT.
- S,P,N Emmet, Alan. *So Fine a Prospect: Historic New England Gardens*. Hanover NH, 1996, ◇IA-B.
- N Hunnewell, Hollis Horatio [sic; grandson of *Horatio Hollis Hunnewell*], ed. *The Life, Letters and Diary of Horatio Hollis Hunnewell...* . Privately printed, 1906. 3 vols. Holders of all 3 vols.: Allen County (Indiana) Public Library; Boston Athenaeum; Harvard University; Wellesley Historical Society.
All 3 vols.: ◇*familysearch.org* . Vol.2, *Diary*: ◇HT; vols. 1 & 2 only: ◇IA.
- S Luedke, James A., Jr. "Wellesley's Hunnewell Estate in 19th-Century Stereo Views." *New England Journal of Photographic History*, n.169, 2010–2011, pp. 42–64,
McShane, Linda. "*When I Wanted the Sun to Shine*": *Kilburn and Other Littleton, New Hampshire Stereographers*. Littleton NH, 1993, ◇X.
National Stereoscopic Association, *stereoworld.org*; select "3D Lists". Lists of stereo views by maker, in most cases showing their original catalogs. Not comprehensive. Makers listed in this catalog are Berry, Kelley & Chadwick, Griffith & Griffith, J. F. Jarvis, Keystone, Kilburn, Underwood & Underwood, Universal Photo Art Co. (C. H. Graves), and H. C. White, of which only two list Hunnewell views. Berry, Kelley & Chadwick and Kilburn (listed under the name of its agent J. M. Davis).
Ronald Polito, editor. Chris Steele, Ronald Polito, compilers. *A Directory of Massachusetts Photographers, 1839–1900*. Camden ME, 1993. Online, with updates: ◇*openarchive.umb.edu*.

Shaw, Isabella Pratt Hunnewell. *The Welles Family and Wellesley: Genealogical, Historical, and Topological Notes Compiled from Letters, Diaries and Other Sources*. Privately printed, 1925.

Known holders: New England Historic Genealogical Society; Wellesley College. ◇X.

Waldsmith, John S. *Stereo Views: An Illustrated History and Price Guide*. 2nd ed. Iola WI, 2002, ◇X.

Welling, William. *Collectors' Guide to Nineteenth Century Photographs*. N.Y. City, 1976, ◇IA-B.

Hunnewell Estate Stereo Views in Public Collections

Some 181 stereo views of the estate can be found in public collections. The largest holder is the American Antiquarian Society, Worcester, Massachusetts, which has some 100 views, including a unique group made in the 1860s by an anonymous maker, herein called the 1860s Maker. The Wellesley Historical Society owns several dozen views. Historic New England, Boston, has over 65 views. The U.S. Library of Congress, owner of 52,000 or more stereo views, owns several dozen Hunnewell stereos, including some 46 views by Seaver, not online, and some 20 by Kilburn and later makers, online. New York Public Library owns over 30 views, shown online. Views are also shown online in the Keystone–Mast Collection at the University of California, Riverside.

The public holders of Hunnewell stereo views, with their abbreviations used in the catalog, are as follows. Those marked “◇” show views online:

American Antiquarian Society (AAS), Worcester, Massachusetts. *americanantiquarian.org*. Largest known public collection of Hunnewell views; over 100.

Boston Athenaeum (BA), *bostonathenaeum.org*. Approx. 20 views.

George Eastman Museum (GEM), Rochester, New York. *eastman.org*. Views by Seaver & Pollock, including a few Hunnewell.

Getty, J. Paul, Museum, California. *getty.edu*. Several dozen views by Chandler Seaver, Jr., including approx. 15 Hunnewell estate.

◇ Historic New England (HNE), Boston. *historicnewengland.org*. Second-largest known public collection; over 65 views.

Historical, Natural History and Library Society of South Natick (Massachusetts) (Natick Historical Society (NHS). *natickhistoricalsociety.org*. Approx. 20 views.

◇ New York Public Library (NYPL), New York City. Robert N. Dennis Collection of Stereoscopic Views. *digitalgallery.nypl.org*. Approx. 30 views. ◇.

◇ Smithsonian Institution. Archives of American Gardens (AAG) *collections.si.edu*. Approx. a half-dozen stereo views. Also lantern slides; 20th-century non-stereo photographs.

◇ Smithsonian Institution. National Museum of American History (NMAH). *americanhistory.si.edu*. Approx. 8 stereo negatives; also non-stereo photographs.

◇ Tufts University (Mass.). Tufts Digital Collection. *dl.tufts.edu*. Early 20th-century non-stereo photos.

University of California, Riverside (UCR). California Museum of Photography. Keystone-Mast Collection. *oac.cdlib.org*. Approx. 18 original stereo negatives.

◇ U.S. Library of Congress (LC). Prints & Photographs Online Catalog. *loc.gov/pictures/collection/stereo*. Several dozen stereo views by Seaver, not online, and Kilburn, online.

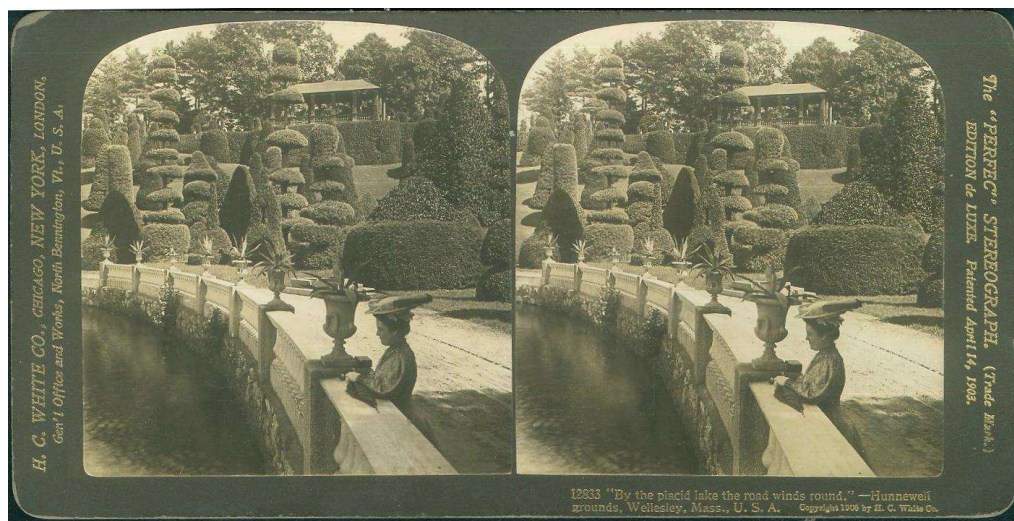
◇ Wellesley College (WC). Archives Image Gallery. *sscommons.org*. Several stereo views; approx. 100 non-stereo photos.

Wellesley (Mass.) Historical Society (WHS). *wellesleyhistoricalsociety.org*. Approx. a dozen views.

Catalog Guide

For the user's convenience, this section of the catalog is posted separately as well. It can be launched on-screen along with the catalog, and referred to without having to scroll back up here for explanatory information. Or it can be printed out and used by one's computer. Access it at <http://tinyurl.com/34jeuu4r>.

This 1906 stereo view by H. C. White Co. shows a woman in a flamboyant period hat, standing by the lakeside balustrade in the Hunnewell estate's exotic Italian garden. Some of the garden's tall conifer trees, pruned into fanciful shapes—*topiary* trees—and the garden's viewing pavilion, are seen in the background:



The catalog entry for this view is:

279 I-222 12833. "By the placid lake the road winds round."—Hunnewell grounds...
 • Sc•Gg•2d•Cft•Cft•—.
 • View along lakeside balustrade; Italian garden beyond. Woman in hat...
 • Holders: AAS, NMAH.

Explanation:

279 *Catalog number.* The catalog's basic identifier of the stereo view.

I-222 *Image identifier.* Uniquely identifies the image. Some stereo views were reissued by a different maker, or by the same maker with a different card number, subject caption, etc. (further explained below). Reissues are listed separately, each with their own catalog number, but the image identifier is the same in each.

12833. "By the placid lake the road winds round."—Hunnewell grounds...

Maker's card number and subject caption, if any. With many makers, either or both are omitted.

View along lakeside balustrade; Italian garden beyond. Woman in hat...

This catalog's description of the subject in the stereo view.

Sc•Gg•2d•Cft•Cft•—

A standard code encapsulating the features of the card (card shape and color, maker's markings, etc.), an innovation of this catalog. Details below.

Ex (not present in the example)

Denotes that a copy of the view was once owned by one of two late stereo collectors whose collections have been dispersed: Ron D. Lowden, Jr. of Needham, Massachusetts, later Pennsylvania; or T. K. “Tex” Treadwell of Texas.

Holders:

Identifies public holders of the view—in the example above, the American Antiquarian Society (AAS) and National Museum of American History (NMAH). See the institutional abbreviation legend below.

Filing Order

Entries in the catalog are grouped by the maker’s name. Within each maker, filing order is by the maker’s card number, if there is one—here 2855 and 2856:

120	I-76	2855. The Poets [sic] Dream, Wellesley. • Italian garden. Deck of lawn...
121	I-77	2856. The Artists [sic] Dream. • Italian garden. Small part of shrub...

Where a card number and caption are absent, filing order is by the catalog’s description:

254	I-209	Rustic footbridge over little ravine with boulders.
255	I-210	Short curving rustic fence.

Reissues

Issue refers to the published object, not the image itself. The same image published by two or more makers, and reissues of an issue by its original maker, are considered separate issues and cataloged separately. Reissues are shaded in color. Here, an original view by J. F. Jarvis was reissued by Underwood & Underwood. Note that they have the same image identifier, I.71.1:

Jarvis, J. F., Washington, D.C.		
114	I-71.1	Wellesley College from Hunnewell’s Gardens, Massachusetts, U.S.A. • Reissued as: 207 (Underwood & Underwood). • Etc.
Underwood & Underwood. New York City		
277	I-71.1	Wellesley College from Hunnewell’s Gardens, Massachusetts, U.S.A. • Reissue of 114 (Jarvis). • Etc.

Where the maker’s name is shaded too, as with Underwood & Underwood above, it means it made reissues only.

Segment 2 Card color

- Character 1 ● **Front** (recto)
- A - Aqua-green
 - B - Buff, pinkish-buff, or tan
 - C - Cream
 - G - Gray
 - L - Lilac
 - O - Orange
 - P - Peach, light pumpkin, or salmon
 - Y - Yellow
 - (dash) - Uncolored (plain cardboard)
- Character 2 ○ **Back** (verso)
- (optional)
- b - Buff, pinkish-buff, or tan
 - c - Cream
 - g - Gray
 - l - Lilac
 - p - Peach, light pumpkin, or salmon
 - q - Purple
 - s - Pale sea-green (Chandler Seaver, Jr. only)
 - w - White (William B. Gardner only)
 - x - Uncolored (plain cardboard)
 - # - (Seaver only). Verso uncolored, with a colored geometric pattern across it. When the recto is peach or salmon (P), the pattern is the same color. When the recto is yellow (Y), the pattern is blue.

Segment 3 Paper on which the photo pair is printed

- Character 1 ● **Number of pieces of paper**
- 1 - One, both photos printed thereon
 - 2 - Two; one photo on each
- Character 2 ○ **Paper shape**
- (optional)
- d - Domed. Top edge has a convex curve over each photo; other edges straight.
 - s - All edges straight.
- Character 3 ○ **Corners**
- (optional)
- c - (Only 1 view, by William B. Gardner). The 4 outer corners of the 2 pieces of paper are round.
 - e - (International Stereograph Co. only). The bottom 2 corners of the single piece of paper are round.

Segment 4 Maker's name

- Character 1 ● **Location**
- C - On the cardboard of the card itself
 - L - On an adhesive label on front of card (William B. Gardner only)
 - P - Reproduced in the photograph itself (usually the right photo)
 - (dash) - No maker's name
- Character 2 ○ **Card side**
- (optional)
- b - Back (verso)
 - f - Front (recto)
 - 2 - Both front and back
- Character 3 ○ **How written**
- (optional)
- h - Handwritten
 - t - Typeset
 - w - Typewritten

Segment 5 Subject caption

3 characters Values are the same as in segment 4.

Segment 6 Hand coloring of photos

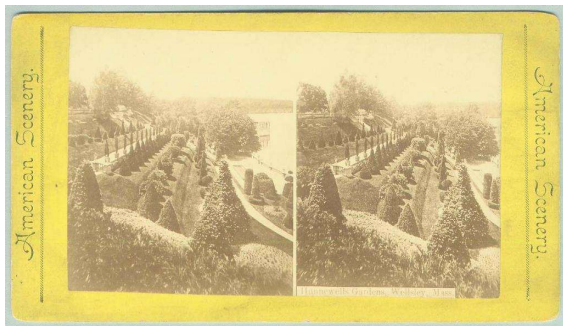
- 1 char.
 - **B** - Both hand-colored and not colored versions are known
 - C** - Hand-colored
 - (dash) - Not hand-colored

In any segment, “?” instead of a code character means the datum in that position is unknown. For example, “Y?” here means that the card’s recto is yellow, but the verso color is unknown:

Sf•Y?•2d•Cft•--

“?” standing in for an entire code segment means no datum in that segment is known. The compiler saw the view but neglected to write down all the data elements; the source in which it was illustrated showed the recto only; the illustration was black & white and color data are unknown; etc. In this example, nothing about the paper on which the photo pair is printed is known: **Sc•Bb•?•Cbt•Cft•C**

Descriptor Code: Examples



18. American Scenery Co.
Sf•Yy•1s•Cft•Pw•-. Both photos on 1 piece of paper. All 4 corners of paper square.



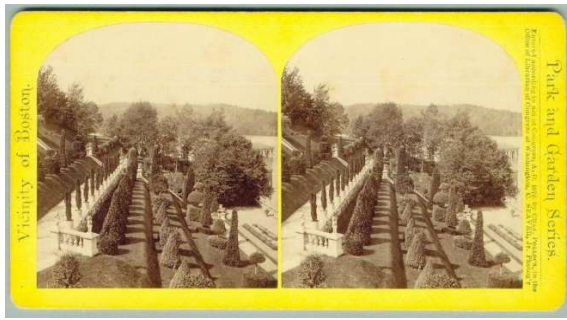
93. William B. Gardner
Sf•Ll•2so•--•-. Photos on separate pieces of paper. The outer 4 corners pair are round.



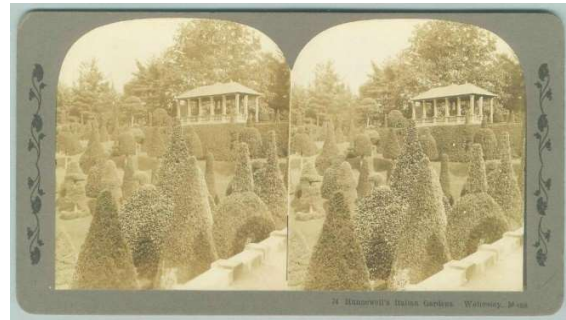
108. International Stereograph Co.
Sc•Gg•1db•Cft•Cft•-. Both photos on 1 piece of paper. Photos domed. The two bottom corners are round



153. B. W. Kilburn.
Sc•Bb•2s•C2t•Cft•B. Photos on separate pieces of paper. All 8 corners of paper pair square.



227. Chandler Seaver, Jr. / Charles Pollock
Sf•P#•2d•Cft•—•C. Each photo on separate
 piece of paper. Photos domed.



268. Sterro-Photo [sic] Co.
Sc•Gg•1d•Cft•Cft•—. Both photos on
 1 piece of paper. Photos domed.

Abbreviations & Terms

General

college, the	Wellesley College (opened 1875)
College Hall	Wellesley College's first major building (burned down 1914)
Ex.	View was once owned by stereo collectors Ron D. Lowden, Jr. of Needham, Massachusetts; or T. K. "Tex" Treadwell of Texas.
lake, the	Lake Waban, Wellesley
recto	front of the stereo card
Stone Hall	Wellesley College's second major building (opened 1881)
verso	back of the stereo card

Public collections

See section *Hunnewell Estate Stereo Views in Public Collections*, above.

AAG	Smithsonian Institution, Archives of American Gardens
AAS	American Antiquarian Society, Worcester, Mass.
BA	Boston Athenaeum
BPL	Boston Public Library
GEM	George Eastman Museum, Rochester, N.Y.
HNE	Historic New England, Boston
LC	U.S. Library of Congress
NMAH	Smithsonian, National Museum of American History
NHS	Natick (Massachusetts) Historical Society
NYPL	New York (City) Public Library
UCR	University of California, Riverside
WC	Wellesley College Library
WHS	Wellesley Historical Society

Pronunciations

Barnstable	BARN-stə-bl. <i>Town on Cape Cod, Massachusetts.</i>
Cambridge	KAYM-bridj. <i>City, adjacent to Boston.</i>
daguerreotype	də-GAIR-ə-type. <i>Early photograph medium.</i>
Decatur	də-KAY-ter. <i>City, Illinois.</i>
espalier	ess-pah-l'YAY. <i>A system of growing plants or fruit indoors on lines.</i>
Hunnewell	HUNN-ee-well.

Hyannis	hy-ANN-əs. <i>Village in Barnstable, Massachusetts.</i>
Natick	NAY-tick. <i>Town, adjacent to Wellesey.</i>
Needham	NEED-'m. <i>Town, adjacent to Wellesey.</i>
Sherborn	SHER-bern. <i>Town, Massachusetts.</i>
topiary	TOH-pee-air-ee. <i>Sculpting trees into novel shapes as they grow.</i>
Waban	WAH-b'n. <i>Lake in Wellesey, between Hunnewell estate & Wellesey College.</i>
Wellesley	WELZ-lee. <i>Town, Massachusetts.</i>
Worcester	WOOSS-ter (as in "good"). <i>City, east-central Massachusetts.</i>

* * *

H. H. Hunnewell Estate

Wellesley, Massachusetts

Catalog of Stereo Views

Cat. no.	Image no.	Card no.; subject caption. • Descriptor code; description; notes	Number of issues by maker <i>Shaded</i> entries are reissues or pirates
----------	-----------	---	--

America Illustrated see Seaver, Chandler, Jr.
American Stereoscopic Co. see Young, R. Y.

American Views			
New York City. Unknown pirate maker. 1880s? No city name or card number on card. Cheap, inferior product. Photo pair shortened at left & right, leaving room for card sellers' ads.			
Italian garden			
1	I-169	ITALIAN GARDEN. NEAR BOSTON. • Sf•Yx•1s•Cft•Pt•—. • Reissue or pirate of 214 (Seaver).	
2	I-177.1	ITALIAN GARDEN. NEAR BOSTON. • Sf•Yp•1s•Cft•Pt•? Sf•Yq•1s•Cft•Pt•? Sf•Y•1s•Cft•Pt•?. Holders: AAS, NYPL. • Reissue or pirate of 222 (Seaver). • Often (usually?) with no maker's name, and lines of a seller's ad vertically, left & right margins. Sellers known from Biddeford, Maine; Brockport, New York; Youngstown, Ohio; Brattleboro, Vermont.	
3	I-173	<i>No subject caption.</i> • Sf•Yx•1s•Cft•—•—. • No seller's marking, at least on recto. Marked <i>American Views.</i> on left, <i>Standard Series.</i> on right. • Reissue or pirate of 218 (Seaver).	

Anonymous—1860s maker			8 issues
U.S., city unknown. Circa mid-1860s. These and views by the <i>Early Greenhouse</i> maker are the only ones herein with the smaller 1860s-size mount. Professionally made. Part of a collection of several views taken in present Wellesley held by American Antiquarian Society (AAS), Worcester, Mass. Hunnewell estate not named in catalog data; identifiable only by someone who knows the visual clues. Views too generic to identify (showing only lawn, trees, etc.) are omitted here. If all views by this maker were made concurrently, then made possibly between spring & autumn, 1866. One card shows mansion house conservatory, completed June, 1866. Two other cards show, on Italian garden west slope, a balustrade Hunnewell said he removed on Oct. 30, 1866. Cards blank; no marking. These are the second-earliest known stereo views of a Hunnewell subject.			

All entries: **Ef•—•2d•—•—•—.** Holder: AAS.

Front estate			
4	I-1	<i>View east.</i> • Mostly nondescript. Large tree, right center. Lion statue, urn.	
5	I-2	<i>View north.</i> • Area northeast of house, heading toward tea house. Tree framing image, left. Three <i>Auricularias</i> (monkey puzzle trees) in boxes; walk; Lake, left.	
6	I-3	<i>View west.</i> • <i>View west.</i> Drive; lion statue, right. House mostly hidden by trees.	

Cat. no.	Image no.	Card no.; subject caption. • Descriptor code; description; notes	Number of issues by maker <i>Shaded</i> entries are reissues or pirates
House			
7	I-4	Front of mansion house. • Lawn, drive, house, conservatory. Conservatory completed June, 1866, hence view's ostensible earliest date.	
8	I-5	House obliquely from west. • 2 chimneys, front portico, balcony. Trees, left.	
Italian garden—High view; terraces ascending left to right; lake left			
9	I-6	Pedestals. • Very young terraces, right. Lakeside balustrade, left.	
Italian garden—High views; terraces descending left to right; lake not visible			
10	I-7	Receding walk. • On western terrace 5. Hedges, shrubs. Balustrade on terrace 6, left. Curbing on walk. Ostensibly taken on or before Oct. 30, 1866; see note under next entry.	
11	I-8	Very young Italian garden. • Western slope. Terraces sharply defined. Terrace 1, pale-colored, curving at bottom. Highly regimented, very young topiaries as still-thin shrubs. Tea house just discernible in distance, above. • Illustrated: Luedke (see sources ↑). • Enlarged copy photo known. Balustrade on terrace 6 said to be removed Oct. 30, 1866; hence ostensibly view's latest date. • Reissued or pirated as 70 (issuer unknown).	
Anonymous—American Scenery			13 issues
U.S., city unknown. Marked " <i>American Scenery.</i> " vertically, in both left & right margins. No card number known on any view.			
Cottage			
12	I-147	Card number & subject caption, if any, unknown. • S?•?•?•Cft•?•?. • Reissue or pirate of 192 (Seaver). • Upper entrance lodge, Washington Street.	
Italian garden—High views; lake in center, or across view in distance			
13	I-169	ITALIAN GARDEN, NEAR BOSTON. Or: No caption. • Cf•Yx•1s•Cft•Pt•? Sf•Bx•1s•Cft•—•? Sf•Yx•1s•Cft•Pt•?. Holder: AAS. • Reissue or pirate of 214 (Seaver). Card markings if any unknown.	
14	I-167	Card number & subject caption, if any, unknown. • Cf•Cc•2s•Cft•?•?. Holder: AAS. • Reissue or pirate of 212 (Seaver).	
15	I-168	Card number & subject caption, if any, unknown. • Cf•Cc•2s•Cft•?•?. Holder: AAS. • Reissue or pirate of 213 (Seaver).	
Italian garden—High views; terraces ascending left to right; lake not visible			
16	I-173	Card number & subject caption, if any, unknown. • C•Yx•1s•Cft•?•?. Holder: AAS. • Reissue or pirate of 218 (Seaver).	
17	I-177.1	Card number & subject caption, if any, unknown. • Cf•Bb•1s•Cft•?•?. Holder: AAS. • Reissue or pirate of 222 (Seaver).	

Cat. no.	Image no.	Card no.; subject caption. • Descriptor code; description; notes	Number of issues by maker <i>Shaded</i> entries are reissues or pirates
----------	-----------	---	--

Italian garden—High views; terraces descending left to right; lake not visible			
18	I-9	Hunnewells [sic] Gardens, Wellsley, [sic] Mass. • Sf•Yy•1s•Cft•Pw•- . Holder: AAG. Illustrated in catalog intro ↑. • Marked <i>American Scenery / American Scenery</i> . Photos differ in size; crudely cut; mounting cockeyed. Presume reissue or pirate, but original unknown. • Wide lens. Top of east hedge with conical topiary shapes, bottom foreground. Strong sunlight. Straight, highly regimented, receding terraces. Topiaries in tubs along west walk. Boathouse; lake.	

19	I-181	Card number & subject caption, if any, unknown. • Sf•Ox•1s•Cft•Cft•- . Holders: HNE, NYPL. • Reissue or pirate of 226 (Seaver).	
----	-------	---	--

20	I-183	Card number & subject caption, if any, unknown. • Sf•Yx•1s•Cft•?•? . Holder: HNE. • Reissue or pirate of 228 (Seaver).	
----	-------	--	--

Italian garden—Mid-level view; terraces descending left to right; lake not visible			
21	I-81	Hunnewell's Grounds, Wellesley, Mass. • Sf•Yy•1s•Cft•Pt•- . Holder: AAG. • Reissue or pirate of 125 (Kilburn 3113).	

Italian garden—Other views			
22	I-10	ITALIAN GARDEN, NEAR BOSTON. • Cf•Yx•1s•Cft•Pt•? . Holder: AAS. • Presume reissue or pirate. • View east. Hedge, walk.	

23	I-202	Card number & subject caption, if any, unknown. • Sf•P?•1s•Cft•?•? . Holder: HNE. • Reissue or pirate of 246 (Seaver).	
----	-------	--	--

24	I-11	Card number & subject caption, if any, unknown. • Sf•?•1s•Cft•?•? . • Presume reissue or pirate. • View west. Conical topiary, left.	
----	------	---	--

Anonymous—"B" Series
U.S., city unknown. Marked "B" Series.

Italian garden			
25	I-46	Card number & subject caption, if any, unknown. • S?•?•?•Cft•?•C. • Reissue or pirate of 63 (original maker unknown).	

Anonymous—Early Greenhouse maker
U.S., city unknown. May or may not be Hunnewell estate. Circa 1860s. Handwritten card number on recto the only marking. A series? Cards 7" x 3-9/32". These and views by the 1860s Maker are the only ones herein with the smaller 1860s-size mount. Recto bright yellow; cards with tiny round, almost square corners.

Back estate	<i>Unknown if numbers 1–21, or 24 and higher, exist.</i>		
—	—	22. No subject caption. • Ef•Yc•2s•••- . • Present chicken house? If so, looking east. Flower bed with border. Part of an early greenhouse, left. No chimney. Berm-like low hedge & curving walk, circling. 2 urns, same style as H– estate's; numerous potted plants.	

Cat. no.	Image no.	Card no.; subject caption. • Descriptor code; description; notes	Number of issues by maker <i>Shaded</i> entries are reissues or pirates
----------	-----------	---	--

—	—	23. No subject caption. • Ef•Yc•2s•—•—• . Illustrated: Luedke (see sources ↑). • Same as above, except camera farther left; much of greenhouse visible; chimney, left margin.	
---	---	---	--

Anonymous—Fiber Mount maker

U.S., city unknown. Cabinet size (4"x7"—4½"x7"). Early 1880s? Gray mounts embedded with small dark fibers, the only views with that trait herein. Cards cut down, top or bottom, by about ½ inch, reason unknown. Cards blank; no marking.

All entries: **Cf•G•2d•—•—•**. Holder: AAS.

Italian garden

26	I-12	Lawn. • Wide lens; distortion, left. 4 conical shrubs. Topiaries in profusion. Long hedge with topiary cones, right. Farther: lakeside balustrade, lake, small part of building.	
----	------	--	--

27	I-13	Mushroom-shaped topiary. • Steps. Lake in distance.	
----	------	---	--

28	I-14	Part of 3-tier topiary, framing left. • Another topiary, framing right. Wide lens. Curving walk, topiaries in profusion. Lakeside balustrade & lake in distance.	
----	------	--	--

Anonymous—Hand-Colored maker 9 issues

U.S., city unknown. Active circa mid-1870s. Near-contemporary of Chandler Seaver, Jr. Many card colors. Photos domed. Two dome shapes known—one standard-looking, one flatter. All cards hand-colored, some elaborately. No marking on card.

Conservatory—Interior

29	I-15	Camera close to frame & door, far end. • Sf•Yx•2d•—•—•C . Holder: HNE. • Arch in center. Statue in arch. Plants, left & right. Small part of aisle, center.	
----	------	---	--

30	I-16	Long aisle with wooden-curb. • Sf•B•2d•—•—•C Sf•Y•2d•—•—•C Sf•Yp•2d•—•—•C . Holders: AAS, HNE. • Illustrated: Emmet, p.98 (see sources ↑). • One curb near lower right corner, depending on image registration. Crowding plants, left & right. Statue in arch door in distance.	
----	------	--	--

House area—Front

31	I-17	Flowers, walks. • Sf•Ax•2d•—•—•C Sf•Bx•2d•—•—•C Sf•Yx•2d•—•—•C . • Holders: AAS, HNE, NHS (all 3 varieties). Illustrated: Luedke (see sources ↑). • Children on stone steps, left. Beds. Receding balustrade with ornate urns in distance. House out of view, left.	
----	------	--	--

32	I-18	Left edge of shrub & round bed, right. • Sf•Bx•2d•—•—•C Sf•B•2d•—•—•C . Holders: NYPL, WHS. • Balustrade with 2 ornate urns. Head of male torso forming left handle of right urn broken off. Beds beyond.	
----	------	--	--

33	I-19	Tropical plant, large, in round bed. • Sf•Ax•2d•—•—•C . Holder: NHS. • Balustrade. Conservatory in distance.	
----	------	--	--

Cat. no.	Image no.	Card no.; subject caption. • Descriptor code; description; notes	Number of issues by maker <i>Shaded</i> entries are reissues or pirates
----------	-----------	---	--

House area—Rear

- 34 I-20 *Parterre area.*
- Sf•Bx•2d•—••C. Holder: NHS.
 - Subject similar to Downing-Sargent Plate IV engraving of parterre area (see catalog intro ↑).
 - 2-tier fountain, spraying. Part of spiked tropical plant, right. Balustrade with opening.
 - *Only known stereo view of parterre area.*

Italian garden—High view; terraces ascending left to right; lake left

- 35 I-21 *Possibly wide lens.*
- Sf•A?•2d•—••C | Sf•Yy•2d•—••C | Sf•Yx•1d•—••C. Holders: AAS, BA.
 - 2 women in 1860s–1870s clothing, standing by square decorative pedestals of garden main steps (descending left, out of view). Young topiaries on east slope, near distance. Farm-like structures in distance.
 - Reissued or pirated as 44 (Stereoscopic Studies).

Italian garden—Low view, looking in; part of lakeside drive usually in foreground

- 36 I-22 *Rectangular bed, obliquely.*
- Sf•Yb•2d•—••C. Holders: BA, NHS.
 - Couple standing behind bed. Terraces, hedges, young topiaries.

Rockery area

- 37 I-23 *Rustic fence.*
- Sf•Ax•2d•—••C | Sf•Bb•2d•—••C | Sf•Yx•2d•—••C. Holder: BA.
 - 2 children seated on ground. Lower rustic arbor in distance. Woman barely discernible in arbor.

Anonymous—Lilac Mount maker

U.S., city unknown. Active circa early or mid-1870s. Cards lilac, sometimes faded almost to white. Perhaps William B. Gardner, Sherborn, Mass., who issued Hunnewell and other views on similar lilac mounts. Photos crudely hand-cut, typical of Gardner. No marking on card.

Both entries: • Sf•Ll•2d•—••—.

Front estate

- 38 I-24 *Lawn.*
- Mansion house in distance.

Italian garden

- 39 I-25 *Round, cushion-shaped top of topiary.*
- Just visible, lower right margin. Lowest terrace with wide variety of young topiaries. West terraces barely visible, left. Perfectly straight new, uncultivated west terraces in distance, far left.
 - Deciduous trees in distance, center. Boathouse; lake.
 - Cropping varies.

Anonymous—Mansion House maker

Amateur. U.S., city unknown. Taken perhaps 1866. So named for the H. H. Hunnewell estate's residence, called the *mansion house*. On completion, 1852, it had an open porch, on right, later removed & replaced by the present conservatory, completed 1866. No marking on card.

- 40 I-26 *Mansion house.*
- ?f•?•2s•?•?•—.
 - From approx. east. Side of house bare. Porch gone, conservatory not yet built.
 - Grainy image; possibly salt print. Known only from enlarged copy photo. Shows all of left photo, & small part of right photo, of original stereo pair. Original left image in landscape format, highly unusual for a stereo, in any era.
 - Disposition of original unknown.

Cat. no.	Image no.	Card no.; subject caption. • Descriptor code; description; notes	Number of issues by maker <i>Shaded</i> entries are reissues or pirates
----------	-----------	---	--

Anonymous–*Picturesque Views of / The Wide, Wide World*

U.S., city unknown. Marked “*Stereoscopic Picturesque Views of / Mountain, Valley and Stream.*” on left; “*The Wide, Wide World. / Made in the United States.*” on right. Perhaps 1880s.

Back estate

- 41 I-27 **Hunnewell’s Italian Gardens, Wellesley, Mass.**
• S?•Yx•1s•–•Pt•–.
• Reissue or pirate of 126 (Kilburn 3114).

Anonymous–*Stereoscopic Studies / Miscellaneous Subjects*

U.S., city unknown. Marked *Stereoscopic Studies* on left, *Miscellaneous Subjects* on right.

Conservatory

- 42 I-28 **GARDEN SCENE.**
• Sf•Ox•2d•–•Cft•–.
• Reissue or pirate?
• Conservatory exterior, rear. Shrub in tub; walk.

Italian garden–High view; lake in center, or across view in distance

- 43 I-169 **ITALIAN GARDEN, NEAR BOSTON.** Or: *No caption.*
• Sf•Px•1s•Cft•–• | S?•Aa•?•Cft•–•?. Holder: AAS.
• Reissue or pirate of 214 (Seaver).

Italian garden–High view; terraces ascending left to right; lake not visible

- 44 I-21 *No subject caption.*
• Sf•Bx•2d•Cft•–•C. Holder: NHS.
• Marked *Stereoscopic Studies / Miscellaneous Subjects.*
• Reissue or pirate of 35 (Anonymous–Hand-Colored maker).

Italian garden–Low view, looking in; part of lakeside drive usually in foreground

- 45 I-195 *No subject caption.*
• Sf•Px•2d•Cft•–•–.
• Marked *Stereoscopic Studies / Miscellaneous Subjects.*
• Reissue or pirate of 240 (Seaver).
• Ex Treadwell.

Italian garden–Low view; terraces ascending left to right; lake not visible

- 46 I-29 *No subject caption.*
• Sf•Px•2d•–•–•C.
• Marked *Stereoscopic Studies / Miscellaneous Subjects.* Reissue or pirate?
• Bed, conical conifer topiary dominating. East terraces beyond. Hedge on terrace 4 & upper parapet hedges in distance.

Anonymous–Unknown makers–Original issues

17 issues

U.S., city unknown. Legitimate originals, views believed to be so, or those tentatively so classified, by unknown makers, city of business unknown, circa mid-1870s–circa 1890. Likely one or more views here are reissues or pirates which, if so, should be listed in the section following instead.

Back estate

- 47 I-30 **Fairer than any of which poets dream. HUNNEWELL’S, ...** (remainder cut off).
• Sf•Bx•1s•–•Pt•–. Holder: HNE.
• Reissue or pirate?
• English garden. Tropical fronds in high round bed. Cacti. Tent frame in distance.

Cat. no.	Image no.	Card no.; subject caption. • Descriptor code; description; notes	Number of issues by maker <i>Shaded</i> entries are reissues or pirates
	I-30	Image variant. • Sf•Bx•1s•—•Pt•— . Holder: HNE. Cropping differs; bed off-center.	
48	I-31	Card number if any unknown. Hunnewell Estate, Wellesley, Mass. / Interior of Greenhouse. • Sf•Yx•2s•—•Cbh•— . Holder: AAS. • Additionally marked 60, meaning unknown. • Receding narrow passageway. Fruit(?) wall left; <i>cordon-</i> (today <i>espalier</i>) system openwork lattice, right. • <i>The only identifiable period photograph, stereo or otherwise, of the interior of a Hunnewell greenhouse.</i>	
49	I-32	Card number & subject caption, if any, unknown. • Sc•Bb•1s•—•?•? . Holder: HNE. • Reissue (or pirate)? Like 126, except acorn-shaped shrub, center.	
Conservatory			
50	I-33	No subject caption. • Sc•Cx•2s•—•?•? . • Part of walk; lawn; <i>Auricularia</i> (monkey puzzle tree) in box. Conservatory front above low skirting wall.	
	—	No subject caption. • Sc•Yx•2d•—•?•? . Holder: AAS. • Same image?	
Cottage			
51	I-34	No subject caption. • Cf•Xc•2d•—•?•? . Holder: HNE. • Lower entrance lodge, Washington Street. Awning open. • <i>51, 190, 191 the only known stereo views of subject.</i>	
Front estate			
52	I-35	No subject caption. • Sf•Yx•2d•—•?•? . Holder: HNE. • Balustrade above brick wall obliquely, close up. Plants in urns with nude male-torso handles, and in square wooden containers.	
Italian garden—High view; lake in distance			
53	I-36	No marking on card. • C?•B?•2d•—•?•? . Holder: WC. • Trunk of conifer tree (the one called the “mushroom tree” herein?) all-predominating. Foliage goes across all of top. Standpipe & valve adjacent to trunk. Yuccas in urns & stone steps. Topiary trees on slope. Lake. College Hall, left horizon. Stone Hall, right horizon.	
Italian garden—High views; terraces ascending left to right; lake left			
54	I-37	ITALIAN GARDEN. NEAR BOSTON. • Sf•Cc•1s•—•Pt•? . Holder: AAS. • Reissue or pirate? • Tall, thin topiaries. 2 multi-tier topiaries right. Stone Hall & another square bldg. in distance.	
55	I-38	No subject caption. • Cf•Px•2d•—•?•? . Holder: AAS. • Hedge, 2 topiary cones. Topiaries. Boathouse in distance.	

Cat. no.	Image no.	Card no.; subject caption. • Descriptor code; description; notes	Number of issues by maker <i>Shaded</i> entries are reissues or pirates
Italian garden—High views; terraces descending left to right; lake not visible			
56	I-39	Hunnewell's Italian Gardens, Wellesley, Mass. • Sf•Bb•1s•—•Pt•— . • Reissue or pirate? • Band of topiaries ascending, lower right to upper left. Modest-sized cylindrical, bolster-like topiary, left of center. Deciduous trees & boathouse in distance.	
57	I-40	Card number & subject caption, if any, unknown. • Sf•Yy•2s•—••?• . Holder: HNE. • Reissue or pirate? • Top of small conical topiary. Terraces. Boathouse in distance.	
58	I-41	No subject caption. • S?•?•?•—•—•?• . Holder: AAS. • Young garden. Long, bare, unplanted terraces west of steps. Lakeside balustrade & boathouse in distance.	
Italian garden—Low view, looking in			
59	I-42	No subject caption. • Sf•Yy•2d•—•—•?• . Holders: AAS, BA. • Group of persons, by bed, holding 2 black parasols or umbrellas. Man kneeling at corner of rectangular bed. Lakeside balustrade, left. Terraces & young topiaries, right.	
Italian garden—Mid-level view; terraces descending left to right; lake not visible			
60	I-43	Hunnewell's Italian Garden, Wellesley, Mass. • Sc•Bb•1s•—•Pt•?• . Holder: AAS. • Reissue or pirate? • Somewhat square, tall pyramidal topiary, left.	
Italian garden—Other views			
61	I-44	No marking on card. • Sf•Y•2d•—•—•— . • Rustic railing, left. Wild brushy plants in containers on top. Low view into Italian garden beyond. • At least 2 copies known. On 1 copy, one photo mounted higher than other, unique in compiler's	
62	I-45	No subject caption. • Sf•Yy•2s•—•—•?• . Holder: AAS. • Topiaries, balustrade. Boathouse in distance.	
63	I-46	No subject caption. • Sf•Yx•2s•—•—•?• . Holder: HNE. Ex Lowden. • Known with J. B. Fairbanks (Natick, Mass.) adhesive seller's stamp, black, perforated, on verso. • View west. Topiaries; 2 bare terraces; 2 persons in distance. • Reissued or pirated as 25 (Anonymous—"B" Series).	
Anonymous—Unknown makers—Reissues & pirates			15 issues
U.S., city unknown. Issued circa mid-1870s—circa 1890. Subject caption, if any, usually in photo itself.			
Back estate			
64	I-51	Fairer than any of which poets dream. HUNNEWELLS, [sic] WELLESLEY. • Sc•Bb•1s•—•Pt•C . Holder: HNE. • Reissue or pirate of 85 (Chase).	
65	I-82	View in Mr. Hunnewell's Grounds, Wellesley, Mass. • S(c)•Bb•1s•—•Ph•? S(c)•Bb•1s•—•Ph•— . Holders: AAS, HNE, NYPL. • Reissue or pirate of 126 (Kilburn 3114).	

Cat. no.	Image no.	Card no.; subject caption. • Descriptor code; description; notes	Number of issues by maker <i>Shaded</i> entries are reissues or pirates
Italian garden—High views; lake in center, or across view in distance			
66	I-55	Fairer than any of which poets dream, HUNNEWELLS, WELLESLE [<i>sic; cut off</i>] • Sc•Bx•1s•—•Pt•—, • Reissue or pirate of 89 (Chase).	
	I-55	LAKE WABAN, Hunnewell's Gardens, Wellesley, Mass. <i>sometimes</i> Mas. [<i>sic</i>] • Sc•Bc•1s•—•Pt•C. Holder: NYPL.	
67	I-52	LAKE WABAN, Hunnewell's Gardens, Wellesley, Mass. • Sc•Bb•1s•—•Pt•C. • Reissue or pirate of 88 (Chase).	
Italian garden—High view; terraces ascending left to right; lake not visible			
68	I-177.1	<i>Card number & subject caption, if any, unknown.</i> • Sf•Pp•2d•Cft•?•?. • Reissue or pirate of 222 (I-177.1) (Seaver). Presume different publisher than no. 17.	
Italian garden—High view; terraces ascending left to right; lake left			
69	I-177.2	<i>Card number & subject caption, if any, unknown.</i> • Sf•Pp•1s•—•?•??. Holder: AAS. • Reissue or pirate of 222 (I-177.2) (Seaver).	
Italian garden—High views; terraces descending left to right; lake not visible			
70	I-8	<i>Card number & subject caption, if any, unknown.</i> • Sf•Yx•1s•—•?•??. Holder: AAS. • Reissue or pirate of 11 (Anonymous—1860s maker).	
71	I-127.1	<i>No subject caption.</i> • Sf•Yy•2s•—•—•—, • Reissue or pirate of 172 (I-127.1) (Randall Bros.).	
	I-127.2	<i>Image variant.</i> • Sf•Yy•2s•—•—•—, • Like I-127.1, except dramatically panned or different cropping. A bit later in the day; shadows on terrace 2 at 2:15. Shadow on terrace 3 below top of thimble topiary on terrace 2. Lakeside drive prominent, center & right. Unlike I-127.1, lake & boathouse visible in distance, right. • Known with J. B. Fairbanks (Natick, Mass.) adhesive seller's stamp, black, perforated, on verso.	
Italian garden—High views; terraces descending left to right; lake right			
72	I-183	<i>Card number & subject caption, if any, unknown.</i> • Sf•Yb•1s•—•?•??. Holder: HNE. • Reissue or pirate of 228 (Seaver).	
73	I-181	<i>No subject caption.</i> • Sf•Yy•1s•—•—•—, Holder: NHS. • Reissue or pirate of 226 (Seaver). • J. B. Fairbanks (Natick, Mass.) adhesive seller's stamp, black, perforated, on verso.	
Italian garden—Low view, looking in; part of lakeside drive usually in foreground			
74	I-47	Hunnewell's Italian Gardens, Wellesley, Mass. ... <i>Caption longer but cut off.</i> • Sc•Yx•1s•—•Pt•C. • Reissue or pirate of 79 (Berry). • Crudely made. Crude cutting of photos.	
Italian garden—Other views			
75	I-78	2856. The Artists [<i>sic</i>] Dream. • Sf•Bx•2s•—•Cft•—, • Reissue or pirate of 122 (Kilburn 2856). • Title hand-stamped, crooked, on right photo.	

Cat. no.	Image no.	Card no.; subject caption. • Descriptor code; description; notes	Number of issues by maker <i>Shaded</i> entries are reissues or pirates
----------	-----------	---	--

76	I-56	A sweet memory of a summer day, Hunnewell's Gardens, Wellesley, Mass. • S?•B?•1s•--•Pt•? . • Reissue or pirate of 86 (Chase).	
----	------	---	--

77	I-202	No marking on card. • Sf•Y?•2d•--•? Sc•Y?•1s•--•?•- . • Presume reissue or pirate of 246 (Seaver).	
----	-------	--	--

I-202	No subject caption. • Sc•Y?•1s•--•?•- Sf•Y?•2d•--•?•- . Narrow black band at bottom of each photo. • Reissue or pirate of 246 (Seaver). Both views by same issuer?		
-------	--	--	--

Rockery area			
78	I-206	No marking on card. • Sf•Yx•2d•--•?•- . • Reissue or pirate of 251 (Seaver). • Unlike with Pollock, curve of rounded card corners smaller; photo mounting less accurate; dome shape different, with part of top edge straight.	

Art Nouveau (Platino) Stereograph, The see Graves, C. H.
"B" Series see Anonymous—"B" Series

Berry, B. W.
Chicago, Illinois. Marked *Berry* and *Universal Stereoscopic View Co.* Active circa early 1890s. Possibly the same Berry operating as Berry, Kelley & Chadwick (see Kelley & Chadwick).

Italian garden			
79	I-47	Hunnewell's Italian Gardens, Wellesley, Mass. • Sc•Bb•1s•--•Pt•C. • The card having the same characteristics as 80, perhaps a reissue of another maker's view too. • 2 complex topiaries with 3 parts each, left. Pedestal with urn, right center. Tall, thin conical conifers, right. Viewing pavilion at top in distance. • Reissued or pirated as 74 (issuer unknown).	

80	I-49	SWEET MEMORIES OF A SUMMER DAY, Hunnewell's Garden... (<i>rest cut off</i>) • Sc•B•1s•--•Pt•C. • Reissue or pirate of 83 (Chase).	
----	------	---	--

Bonine, R. K.
Robert Kates Bonine (bo-NIGHN) (1862–1923), Tyrone, Pennsylvania. Merged 1904(?) with Carleton H. Graves, per Darrah, p.52. (See also Waldsmith, p.34).

Italian garden			
81	I-48	273. Lover's Paradise. • Sc•Bb•1d•Cft•Pt•- . • Italian garden. Yuccas in pots, left. Bit of steps, lower right corner. Man seated on main steps, center. Prominent mushroom-shaped tree, right. Receding west walk with persons & topiaries. • Reissued as 100, 101 (Graves); 107 (Ingersoll).	

Cat. no.	Image no.	Card no.; subject caption. • Descriptor code; description; notes	Number of issues by maker <i>Shaded</i> entries are reissues or pirates
----------	-----------	---	--

Brown, E. M.

Chicago, Illinois. Marked *New York City* and *Chicago* on left; *Greater New York Stereo Co.* and *Series of 1903, by E. M. Brown.* on right.

Back estate

- 82 I-51 3215-3234 [sic]. **Scenes in Hunnewells [sic] Garden, Mass.**
 • Sc•Bb•1d•Cft•Cft•–.
 • Reissue or pirate of 85 (Chase). English garden on back estate.

Chadwick, M. O. *see* Kelley & Chadwick

Chase, W. M., *Excelsior Stereo Views*

9 issues

William Moody Chase (1817–1901), Baltimore, Maryland and Massachusetts. No city identified. Active mid-late 1860s–1890s. Sources say many views are reissues of other makers'. Judging by their appearance, the Hunnewell views could be in that category. Many issues on cream-colored stock marked *Excelsior Stereo Views* [period sic] on left, and *By W. M. Chase* on right. Most cards hand-colored, in green only.

Back estate–English garden

- 83 I-49 **Hunnewell's, Wellesley, Mass. Fairer than any of which painters dream.**
Or: A sweet memory of a summer day. Hunnewell's Gardens, Wellesley, Mass
 • Sc•Cx•1s•Cft•Cft•C. Holder: NYPL.
 • Engraving or woodcut on paper, glued to verso, for seller *The Globe Photo Art Co.*, D. Rhees, Bettsville, OH.
 • Conical conifer in concentric round bed. Hedge arches & tent frame in distance, left.
 • Reissued or pirated as 80 (Berry). For a similar caption see 87.
- 84 I-50 **Hunnewell's, Wellesley, Mass. Fairer than any of which painters dream.**
 • Sc•Cx•1s•Cft•Cft•C.
 • Rectangular geometric bed, obliquely. Round bed & *Auricularia* (monkey puzzle tree). Hedges. Tent frame in distance.
 • For a similar caption see 87.
- 85 I-51 **Hunnewell's, Wellesley, Mass. Fairer than any of which painters dream.**
 • S?•B?•1s•Cft•Cft•–.
 • Marked *Picturesque America; Town, Mountain, Valley and Lake; Excelsior Stereo Views; and Made in the United States.*
 • Stepped conical topiary shrub in round bed. Path or drive; rectangular geometric bed. Plants & trees in distance.
 • Reissued or pirated as 64 (issuer unknown); 82 (Brown).

Italian garden–Views looking in; viewing pavilion at top

- 86 I-56 **A sweet memory of a summer day, Hunnewell's Gardens, Wellesley, Mass.**
 • Sc•Cx•1s•Cft•Cft•C.
 • Looking southeast. Profusion of topiaries, mostly shrub-size. Curving law terrace coming at viewer, right. Tall multi-tier topiary piercing sky, left. Viewing pavilion top right.
 • Reissued or pirated as 75 (issuer unknown). For a similar caption see 83.

Cat. no.	Image no.	Card no.; subject caption. • Descriptor code; description; notes	Number of issues by maker <i>Shaded</i> entries are reissues or pirates
----------	-----------	---	--

87	I-57	<p>A sweet memory of a summer day, Hunnewell's Gardens, Wellesley, Mass. <i>Or: Hunnewell's, Wellesley, Mass. "Fairer than any of which painters dream."</i> For a similar caption see 83.</p> <ul style="list-style-type: none"> • Sc•Cc•1s•Cft•Cft•C. Holders: GEM, NYPL. • Two highly fanciful topiaries left, the left one with ellipsoid center section. Tall, thin conical topiaries, far right. Pedestal & urn, right of center. Viewing pavilion at top, upper center. • A copy seen with incorrect caption "Venus rising from the Sea, and Washington Statue, Pub. Gard., [<i>Public Garden</i>] Boston". Apparent mounting error. 	
----	------	--	--

Italian garden—Looking out. Lake Waban beyond			
88	I-52	<p>Hunnewell's Italian Gardens, Lake Waban, Wellesley, Mass.</p> <ul style="list-style-type: none"> • S(c)•Bb•1s•Cft•Pt— Sc•Cx•1s•Cft•Cft•C. Holders: AAS, HNE. • Looking between 2 topiary shrubs, the one on right with a loophole at top. Shadow of multi-tier topiary on ground & bit of paved walk, foreground. Conical topiary in mid-distance. College Hall • Reissued as 67 (issuer unknown). 	

I-52		<p>LAKE WABAN, Hunnewell's Gardens, Wellesley, Mass.</p> <ul style="list-style-type: none"> • Sf•Cg•1s•Cft•Pt•? 	
------	--	--	--

89	I-55	<p>Hunnewell's Italian Gardens, Lake Waban, Wellesley, Mass.</p> <ul style="list-style-type: none"> • Sc•Cx•1s•Cft•Cft•C. Holder: NYPL. • Tall conical topiary shrub, center foreground. Tall, thinner conical topiary, right, partly concealing 2 extremely tall multi-tier topiaries. Lakeside balustrade & lake mid-distance. Indistinct Stone Hall on horizon, right. • Reissued or pirated as 66 (issuer unknown). 	
----	------	--	--

Italian garden—Mid-level views northwest; lake on right			
90	I-53	<p>Hunnewell's Italian Gardens, Lake Waban, Wellesley, Mass.</p> <ul style="list-style-type: none"> • Sc•Cx•1s•Cft•Cft•C Sc•Cx•1s•Pt•?•C. Holder: AAS. • One or two (depending on cropping) tall conical topiaries, far left foreground. Topiaries ascending, right to left. Part of lake, right. Boathouse, right margin. • Reissued or pirated as 108 (International Stereograph). 	

I-53		<p>Lake Waban, Wellesley, Mass. ... (the rest indecipherable in source seen)</p> <ul style="list-style-type: none"> • S?•C?•1s•Cft•Cft•C. • Marked "<i>Excelsior Stereo Views,</i>" / "<i>Made in the United States.</i>" 	
------	--	---	--

91	I-54	<p>Hunnewell's Italian Gardens, Lake Waban, Wellesley, Mass.</p> <ul style="list-style-type: none"> • Sc•Cx•1s•Cft•Cft•C. • Small topiary shrubs, foreground. Cylindrical, bolster-like topiary, left. Extravagant 8-level topiary piercing sky, right. Part of large deciduous tree, left mid-distance. Lakeside balustrade mid-distance; boathouse left mid-distance. Lake beyond. 	
----	------	--	--

Co-Operative View Co.			
St. Paul, Minnesota. Copyright 1910. By 4 years, the latest known year on a period stereo view of a Hunnewell subject.			
92	I-219	<p>4-digit card number, illegible. Subject caption unknown.</p> <ul style="list-style-type: none"> • S?•?•?•Cft•?•?. • Reissue or pirate of 269 (Sterro-Photo 855). 	

<i>Cor't Series</i> see International Stereograph Co.			
Davis, James M. <i>see</i> Kilburn			
<i>Excelsior Stereo Views</i> see Chase, W. M.			
<i>Foreign Picturesque</i> see Ingersoll, T. W.			

Cat. no.	Image no.	Card no.; subject caption. • Descriptor code; description; notes	Number of issues by maker <i>Shaded</i> entries are reissues or pirates
----------	-----------	---	--

Gardner, William B.

6 issues

Listed in Sherborn, Mass., 1872–1874 (Polito, p.436); Medway, Mass., circa 1865–1880 (p.347); Somerset, Mass., years unknown (p.437). Hunnewell views made probably circa early-mid-1870s. Stereo view (by Gardner?) of Gardner's photo wagon illustrated in William Welling, *Collectors' Guide to 19th-Century Photographs*, 1976), p.49 (no pg. no.). See also *Anonymous–Lilac Mount* maker.

Conservatory

93 I-58 *No marking on card.*

- **Sf•Ll•2so•••••**.
- Lilac card faded almost to colorless, both sides. Photo mounting skewed. Gardner is attributed by having the same card color & unusual print shape as views marked *Gardner* of Ridge Hill Farms, Needham, Mass., held by HNE. Illustrated in catalog intro ↑.
- Conservatory interior. Receding tiled aisle, plants crowding both sides. Prominent large tropical fronds, right. Glass doors at back of room closed.

I-58 • **Sf•Aa•2d•••Cft••**. Holder: AAS.
• Amateurish object. Photos crudely cut.

Front estate

94 I-59 *No subject caption. Rustic Bridge at Hunnewells* [sic] in pencil, recto.

- **Sf•Aa•2d•••••**.
- Gardner attributed by same card color & provenance as 93.
- Front estate. Walk receding through rectangular stone portal, looking southeast. Woodland growth, either side. Bordered walk beyond; tall conical conifer shrubs, left. Shallow open, peaked-roof gazebo in distance.
- *94, 202 the only known stereo views of portal.*

House

95 I-60 **Hunnewell's Mansion.**

- **Sf•Cw•2s•Cbt•Lft••**. Ex Treadwell. Illustrated: Luedke (see sources ↑).
- Caption in adhesive label on recto. Typeset on verso *Photo by W. B. Gardner, Sherborn, Mass.*
- Lawn, beds beyond, mansion house in distance. Shadow of open awning resembles a high, narrow, filled-in, uppercase "R". Conservatory at right.
- *Only known Hunnewell stereo with a maker-affixed adhesive label.*

I-60 *Card variant.*

- **Sf•Aa•2d•••••**.
- No marking on card. "*Hunnewells[sic] Residence.*" in script, pencil, recto. Amateurish object. Photos crudely cut.

I-60 *Card variant.*

- **S••Yy•2s•Pt•?••**. Holder: AAS.
- Card number & subject caption, if any, unknown. Indecipherable line of text in photo, below maker's name.

Italian garden

96 I-61 **Hunnewell's Italian Garden.**

- **Sf•Bx•2s•Pt•Lbt•?**. Holder: WHS.
- Receding west terraces. Comparatively young topiaries. Lake & boathouse in distance, right.

Cat. no.	Image no.	Card no.; subject caption. • Descriptor code; description; notes	Number of issues by maker <i>Shaded</i> entries are reissues or pirates
97	I-62	<i>No marking on card.</i> • Sf•Aa•2d•—•— . Amateurish object. Photos crudely cut. • Gardner attributed by same card color & provenance as 93. • Tip of conical topiary, lower center. Straight, regimented west terraces with topiaries, lower left. Relatively young topiaries, left & right. Lakeside drive; lakeside balustrade; lake, predominant deciduous trees, & boathouse in distance.	
	I-62	<i>No subject caption.</i> • Sf•Bx•2s•—•Cb?•— . • Believe Gardner's name on verso. Professional product. Photos precisely cut & mounted.	
98	I-63	<i>No subject caption.</i> <i>Hunnewells</i> [sic] <i>Italian Garden</i> in pencil on recto. • Sf•Aa•2d•—•— . Amateurish object. Photos crudely cut. • Gardner attributed by having the same card color & provenance as 93. <i>Hunnewells</i> [sic] <i>Italian Garden</i> in pencil on recto. • Possibly wide lens. Oblique view southwest at west terraces. Top of ragged (deciduous?) topiary, left. Top of long thin hedge. Young topiaries; west steps with white columns; 3 persons in white on lakeside drive; long unplanted bank. Terraces beyond steps.	
	I-63	<i>No subject caption.</i> • Sf•Bb•2s•—•Cb?•— . Professional product. Photos precisely cut & mounted. • Believe Gardner's name on verso.	

Gates Brothers

Chicago, Illinois. Active late 19th century. Marked "*PICTURESQUE AMERICA. New Series.*" and "*Gates, Photographer, Chicago.*" on verso.

Italian garden

- 99 I-78 2148. **Artist's Dream Hunnewell's Grounds. Mass.** Title either below left or below right photo.
• **Sc•Bb•1d•Cbt•Cft•C**.
• Reissue or pirate of 122 (Kilburn 2856).

Graves, C. H.

Carleton Harlow Graves (1867–1943), Philadelphia, Pennsylvania. (Occasionally misspelled *Carlton*). Active early 1880s–circa 1910 (Waldsmith, pp. 37–38). Another source says he started his Universal Photo Art Co. in 1896. Darrah (p.52) says he was active 1896–1904, then merged with R. K. Bonine (above).

Marked *C. H. Graves* and *Universal Photo Art Co.*, except where indicated. Sometimes also marked *The Art Nouveau (Platino) Stereograph*. Often marked *Copyright 1901*.

Italian garden

- 100 I-48 273. **"Lovers' Paradise. Hunnywell's [sic] Gardens"**
• **Sc•Bb•1d•—•Cft•—**.
• Reissue of 81 (Bonine). Card number same as Bonine's but no maker's name. Presume Graves but uncertain.
- 101 I-48 4273. **"Lovers' Paradise."**
• **Sc•Bb•1d•Cft•Pt•B**.
• Reissue of 81 (Bonine).
- I-48 *No maker's name.*
• **S?•G?•1s•Cft•Pt•—**.
• Marked *Universal Series, Sold by agents only*, and *Stereoscopic Gems of American and Foreign Scenery*. Card marked with black dot, bottom center. See Waldsmith, p.37.
- — 4274. *Non-Hunnewell subject.*

Cat. no.	Image no.	Card no.; subject caption. • Descriptor code; description; notes	Number of issues by maker <i>Shaded</i> entries are reissues or pirates
----------	-----------	---	--

102		5543. Hunnewell's Gardens, Wellesley, Mass. • Sc•Gg•1d•Cft•Cft•B. Holder: HNE (which of the variations listed below unknown). Blind-stamped maker's name. Caption written in pen. • Italian garden. West walk, receding lower left to upper right. 7 women. Viewing pavilion in right distance.	
	I-64.1	Image variant. • 2 women in foreground close together, right one looking down at other.	
	I-64.2	Image variant. • Same, except right-hand woman looking away.	
	I-64.3	Image variant. • Right-hand woman on other side of walk.	
103	I-65.1	5544. Wellesley College from Hunnewell's Gardens. • Sc•Bb•1d•Cft•Cft•C. Holder: WC. • Italian garden. View toward lake. 7 women. College Hall in distance.	
	I-65.2	Image variant. • Sc•Gg•1d•Cft•Cft•- . Holder: LC. • Like I-65.1, except 8 women.	

Greater New York Stereo Co. *see* Brown, E. M.

Griffith & Griffith
 Philadelphia, Pennsylvania. George W. Griffith (1864–19??) and E. C. (believe Edward C.) Griffith—a brother?
 Active circa 1890s.

Italian garden			
104	I-183	Hunnewell Garden, Wellesley, near Boston, Mass. • S?•B?•2d•Cft•Cft•- . • Marked <i>Stereoscopic Gems of American and Foreign Scenery</i> . • Reissue or pirate of 228 (Seaver).	
105	I-66.1	Hunnewell Gardens, Mass. • Marked <i>GRIFFITH & GRIFFITH, / 1608 South 16th St., Philadelphia, Pa.</i> Card description unavailable. • Reissue or pirate? Card style appears to be later than image. Mid-1870s view? • Wide lens. Part of pedestal top & tips of yucca, lower left corner. Mushroom-shaped top tier of topiary, lower right. Precise curving terraces with young topiaries. Lake & boathouse in distance, right.	
	I-66.1	No marking on card. • S?•Yx•2d•--•? . • Same maker?	
	I-66.2	Hunnewell Garden, Wellesley, near Boston, Mass. • Sc•Cc•2d•Cft•Cft•- . • Marked <i>Sold only by / Griffith & Griffith, / Philadelphia, St. Louis and Liverpool, Eng. / American and Foreign Views</i> . • Like 105, except slightly wider cropping. Based on typeface & marking, possibly later card stock than 105.	
106	I-169	Card number & subject caption, if any, unknown. • S?•B?•?•Cft•?•? . • Reissue or pirate of 214 (Seaver).	

Home Series *see* Seaver, Chandler, Jr.—2. Charles Pollock reissues

Cat. no.	Image no.	Card no.; subject caption. • Descriptor code; description; notes	Number of issues by maker <i>Shaded</i> entries are reissues or pirates
----------	-----------	---	--

Ingersoll, T. W.

Truman Ward Ingersoll (1862–1922), St. Paul, Minnesota. Active circa 1900. Marked *Foreign Picturesque* and *NEW SERIES*. (See Waldsmith, pp. 40–41).

Italian garden

- 107** I-48 **The Lover's Paradise, West Point.** [sic]
 • **Sc•Cc•1s•Cft•Pt•–.**
 • Reissue or pirate of 81 (Bonine). Copy photo of entire actual original card. Wrongly refers to Lovers' Walk, West Point, New York.

International Stereograph Co.

Decatur, Illinois. Active circa 1900. Marked *Cor't* [Correct?] *Series*.

- 108** I-53 **20534. Hunnewell's Lovely Grounds, Wellesley, Mass.**
 • **Sc•Gg•1db•Cft•Cft•–.**
 • Reissue or pirate of 90 (Chase).
 • Illustrated in catalog intro ↑.

International View Co., The

New York City & other cities. Active circa 1900. Marked “(*Goods sold by agents only*)” and “*Supply and Manufacturing House*”. Presume not International View Co. of Illinois, mentioned by Waldsmith, p.53.

- 109** I-53 **2140(?) Artist's Dream Hunnewell's Grounds, Mass.**
 • **Sc•B?•1d•Cft•?•C.**
 • Reissue or pirate of 90 (Chase). Quality much better than Chase original.

Jarvis, J. F.

John F. Jarvis (1850–?), Washington, D.C. Active circa 1890s (Waldsmith, p.41). Marked *J. F. Jarvis* on left, and *Sold only by Underwood & Underwood* on right. For issues having *Underwood & Underwood* primary and *J. F. Jarvis* secondary imprint see Underwood & Underwood. Some cards copyright 1894. Some hand-colored. Jarvis was bought out in 1897 by Underwood & Underwood (Waldsmith, p.41).

Italian garden

- 110** I-67.1 **The Artist's Dream, Hunnewell's Grounds, Wellesley, Mass., U.S.A.**
 • **Sc•Bb•2d•Cft•Cft•?.** Holders: AAG, NYPL, UCR, WC, WHS.
 • West terraces, ascending lower right to upper left. Somewhat square pyramidal topiary. Woman & child; no man.
 • Reissued as 273 (Underwood).
-
- I-67.2 **Image variant.**
 • **Sc•Bb•2d•Cft•Cft•?.** Holders: NHS, WC.
 • Like I-67.1, except man on upper terrace with lawn mower.
-
- I-67.3 **Image variant.**
 • **Sc•Bb•2d•Cft•Cft•?.** Man absent.
-
- 111** I-68.1 **A Poem in Trees, Hunnewell's Grounds, Boston, [sic] Mass., U. S. A.**
 • **Sc•Bb•2d•Cft•Cft•?.** Holders: AAG, AAS, HNE, NHS, UCR.
 • Nearly identical to 113, except only top of tub visible. Woman & child, left corner, holding hands, woman pointing. No “dust cloud” in distance. Small boat shed in distance.
-
- I-68.2 **Image variant.**
 • **Sc•Bb•2d•Cft•Cft•–.**
 • Woman not pointing. Cap the only part of child visible.

Cat. no.	Image no.	Card no.; subject caption. • Descriptor code; description; notes	Number of issues by maker <i>Shaded</i> entries are reissues or pirates
----------	-----------	---	--

	I-68.3	<i>Image variant.</i> • Sc•Bb•2d•Cft•Cft•B. • Woman, lower left corner, touching topiary, looking at camera; child in profile, lower right corner, looking down. Woman, dark clothing, on lakeside path. All 3 variants reissued as 276 (Underwood).	
112	I-69	A Poem in Trees, Hunnewell's Grounds, Wellesley, Mass., U. S. A. • Sc•Bb•2d•Cft•Cft•–. • Eastern slope. Right edge of conical conifer, entire left margin. Topiaries in profusion. Lakeside drive, lakeside balustrade, & tiny triangle of lake in distance, left.	
113	I-70	A Poem in Trees, Hunnewell's Grounds, Wellesley, Mass., U. S. A. • Sc•Bb•2d•Cft•Cft•–. • Eastern slope. Small conifer in tub with handles, above stone curbing wall, left. Most of tub visible. Conical topiary leaning bit right, behind conifer. "Hershey's Kiss" topiary, left. Tall, thin conical topiary, left margin. 2 many-tier topiary trees of identical height just breaking tree line, left. Small "dust cloud" in distance, left of center. Lakeside balustrade & small part of lake in distance. Boat shed not present. • Reissued as 272 (Underwood).	
114	I-71.1	Wellesley College from Hunnewell's Gardens, Massachusetts, U.S.A. • Sc•Bb•2d•Cft•Cft•C. Holder: WHS. • 2 many-tier topiary trees, left, extending well above horizon. Pawn-shaped & cylindrical topiaries partly overlap. No shadows. No woman, child, or boat shed. Stone Hall in distance. • Reissued as 277 (Underwood).	
	I-71.2	<i>Image variant.</i> • Sc•Bb•2d•Cft•Cft•?. Holder: HNE. Ex Lowden. • Like I-71.1, except slightly different camera position; pawn-shaped & cylindrical topiaries don't overlap.	

Kelley, E. W.

Chicago, Illinois & other cities. Founded circa 1900? Later called Presko Binocular Co. (not seen on any Hunnewell view). Kelley also active as Kelley & Chadwick (next maker) and Berry, Kelley & Chadwick, active 1900–1914 (Waldsmith, p.33). Marked *Copyrighted 1903, by William H. Rau.*

Italian garden

115	I-72	1044... [illegible]. Evergreen Terrace of Hunnewells [sic] Beautiful Gardens, Wellesley, Mass. • Sc•Gx•1d•Cft•Cft•C. • Camera on water side of lakeside balustrade. Container plants on receding lakeside balustrade. Steps to lake, far left. Profusion of mature topiary trees. Viewing pavilion, upper right.	
-----	------	---	--

Kelley & Chadwick

Chicago, Illinois. E. W. Kelley and M. O. Chadwick. See also B. W. Berry. At one time called Berry, Kelley & Chadwick (active 1900–1914, per Waldsmith, p.33). Card marked *Copyrighted 1903, by William H. Rau.*

Italian garden

116	I-128	The Artist's Paradise, Hunnewell's Gardens, Wellesley, Mass. • Sc•G?•1d•Cft•Cft•C. • Reissue or pirate of 173 (Rau). Listed in Berry, Kelley & Chadwick's catalog as no. 1045 (National Stereoscopic Assn. Web site). Hence presume also issued with that card number.	
-----	-------	--	--

Cat. no.	Image no.	Card no.; subject caption. · Descriptor code; description; notes	Number of issues by maker <i>Shaded</i> entries are reissues or pirates
----------	-----------	---	--

Keystone View Co.

Benneville Lloyd Singley (1864–1938), Meadville, Pennsylvania. Active 1892–1964 (Waldsmith, p.42); cards herein 1890s. Largest-ever stereo view maker, surpassing Underwood & Underwood. By 1909 it had bought out the stock of American Stereoscopic, Kilburn, Underwood & Underwood, H. C. White, and others. An affiliate, Keystone View Co. of New England, Allston, Boston, issued cards until at least 1947.

— — **9019. “Orange Grove, Riverside, Cal., U.S.A.”**
 · Could be confused with Hunnewell Italian garden. Trees on 2 adjoining terraced slopes meeting at about the same angle as in the Hunnewell garden. All other features differ.

— — **9477, 9478, 9480, 9481. *Not Hunnewell subjects.***

Italian garden

117 I-73 **9479. Hunnewell’s Grounds, Wellesley, Mass.**
 · **Sc•Bb•1d•Cft•Cft•B.** Holders: AAS, HNE.
 · Marked *Keystone* and *B. L. Singley*; copyright 1899.
 · View east-northeast. Potted conifer, edge wall of stone walk. Topiaries in profusion.
 · Image also published as glass lantern slide no. 9479. Maker’s name typeset, caption typewritten: *Hunnewell’s Grounds, / Wellesley, Mass.,* hand-colored; year unknown.

Kilburn

43 issues total

Littleton, New Hampshire. Active 1855–circa 1910. Largest U.S. stereo publisher, until Underwood & Underwood. After 10 its negatives were sold to Keystone (Robinson, p.76). After Seaver, the 2nd-most prolific maker of Hunnewell views. There are two imprints, *Kilburn Brothers* and *B. W. Kilburn*, cataloged separately below. Card color buff to pinkish buff. Card numbers wildly capricious; spelling & punctuation often fractured (see McShane, pp. 74–76, 111–112). Subject composition excellent, but product often with low photo print quality, often faded, which Darrah, p.46, says was long-lasting, 1882–1894, and ascribes it to immature dry-plate technology and mechanization. When hand-colored, often slapdash. Many of Kilburn’s views were taken by Benjamin W. Kilburn himself. Whether he took any Hunnewell view is unknown.

1. Kilburn Brothers

16 issues

Benjamin West Kilburn (1827–1909) and Edward Kilburn (1830–1884). Marked *Kilburn Brothers*, verso, no copyright year. A few marked *B. W. Kilburn*. Edward retired 1875, but *Kilburn Brothers* card stock continued in use for some years until depleted. The listings here were issued 1880s–circa 1890.

118 I-74.1 **2854. The Students Dream, Wellesley.**
 · **S(c)•Cc•2s•Cft•Cft•–.** Illustrated: Luedke (see sources ↑).
 · Italian garden, view toward lake. Fanciful topiaries. Rowboat & College Hall in distance.

I-74.2 *Image variant.*

· **Sc•Bb•2s•Cft•Cft•–.**
 · Like I-74.1, except boat in different position.

119 I-75 **2855. The Poet’s Dream, Wellesley.** Also *Poets* [sic; no apostrophe].
 · **Sc•Cb•2s•Cft•Cft•– | Sc•Bb•2s•Cft•Cft•?.** Holder: HNE.
 · Italian garden. Bit of hanging leafy shrub, lower right corner. 3 shrubs, the left one odd-shaped, the right two conical, along white railing flush with ground, foreground. Topiaries on slope beyond & below. Long rectangular hedge with cones, right. Lake, left. Stone Hall on horizon, left.

Cat. no.	Image no.	Card no.; subject caption. • Descriptor code; description; notes	Number of issues by maker <i>Shaded</i> entries are reissues or pirates
120	I-76	2855. The Poets [sic; no apostrophe] Dream, Wellesley. • Sc•Bb•2s•Cft•Cft•- . Holder: AAS. • Sister of 119, but different. • Italian garden. Deck of lawn with 4 conical topiary shrubs, dark in shadow, along low white railing. Tops of topiaries on slope below. Lake occupies much of left part of image. Horizon not in image. Boat shed not yet built.	
121	I-77	2856. The Artists [sic] Dream. • Sc•Bb•2s•Cft•Cft•- . Holders: AAS, NYPL. • Italian garden. Small part of shrub, lower left corner. 3 topiaries, the leftmost oddly shaped; the right two prominent conical topiaries of differing height. Many-tier slender topiary tree against white lakeside drive, far right. Topiaries in profusion. Lakeside balustrade, far right.	
122	I-78	2856. The Artists [sic; no apostrophe] Dream. • Sc•Cc•2s•Cft•Cft•? . • Different image than 121. • Italian garden. West slope. Thin strip of lawn, bottom. Corner of lawn, lower left. Round conifer shrub, far left foreground. Pair of conical topiaries of differing height, foreground. Many-tier topiary tree contrasted against white lakeside drive, far right. Thin conical topiaries in profusion. • Reissued or pirated as 75 (issuer unknown); 99 (Gates).	
123	I-79	3111. View in Mr. Hunnewell's Grounds, Wellesley, Mass [sic; no period]. Also <i>Hunnewell,s</i> [sic; comma]. • Sc•Cc•2s•Cft•Cft•B. Holder: AAS. • Back estate. Edge of greenhouse bldg., far left. Lady in black just inside large high hedge arch. Curved walk called Holly Path receding between high hedge & small topiaries, either side.	
124	I-80	3112. View in Mr. Hunnewell's Grounds, Wellesley, Mass. • Sc•Bb•2s•Cft•Cft•- . • Back estate walkway receding, right. Small part of lawn, topiary shrubs, & high hedge both sides. Woman in black. Transverse walk beyond. Transverse hedge, presumably with arch, in distance.	
125	I-81	3113. View in Mr. Hunnewell's Grounds, Wellesley, Mass. • Sc•Cc•2s•Cft•Cft•- . Holders: AAS, NYPL, WHS. • Italian garden. Prominent backlit conical topiary, left. Topiaries on terraces. • Reissued or pirated as 21 (American Scenery).	
126	I-82	3114. View in Mr. Hunnewell's Grounds, Wellesley, Mass. • Sc•Bb•2s•Cft•Cft•B. Holders: HNE, WHS. • English garden on back estate. Acorn-shaped conifer shrub in decorative round bed, right. Decorative rectangular bed, left, beyond. More beds, double hedge arches & tent frame in • Reissued or pirated as 41 (issuer unknown); 65 (issuer unknown). • Similar view: 49 (maker unknown).	
127	I-83	3115. View in Mr. Hunnewell's Grounds, Wellesley, Mass. • Sc•Bb•2s•Cft•Cft•- . • Italian garden. Walk & ground occupy most of lower left. Viewing area; pedestals, apparently brick; steps; woman; 3 children. Topiaries on west slope. Balustrade on slope in distance, right. Viewing pavilion not yet built.	

Cat. no.	Image no.	Card no.; subject caption. • Descriptor code; description; notes	Number of issues by maker <i>Shaded</i> entries are reissues or pirates
127A	I-83A	3503. Mr. Hunnewell's Flower Garden, Wellesley, Mass. • Sc•Bb•2s•Cft•Cft•— . • Marked <i>B. W. Kilburn</i> . • Like 127, except no persons. English garden on back estate. Bit of walk, lower left corner. Half of round "ribbon gardening" bed at right. Part of rectangular bed, left. 2 round beds & half of another, right mid-distance. Man in light suit, 2 women in dark clothing, high hedges with arches in distance.	
128	I-84	3504. Mr. Hunnewell's Flower Garden. • Sc•Bb•2s•Cft•Cft•— . • English garden on back estate. Walk. Hedge, tent frame, & carriage house gable in distance.	
129	I-85	3505. The Maiden's Dream. • Sc•Bb•2s•Cft•Cft•C Sc•Bb•2s•Cft•Cft•— . • Italian garden, low-level view. Tall conical conifers framing left & right margins. Rectangular bed obliquely. 3 persons. Topiaries throughout.	
130	I-86	3506. The Real Dream. • Sc•Bb•2s•Cft•Cft•— . Holder: NYPL. • Italian garden, lake-level view. Part of top of pedestal & rhododendron, lower left corner. Lake across much of image. Sweeping curve of lakeside balustrade. East terraces in distance. • Like 162, except 2 persons sitting on steps; reflection in lake disturbed.	
131	I-87	4066. I dream of the beautiful the Great Unknown. • Sc•Bb•2s•Cft•Cft•B . • Marked <i>B. W. Kilburn</i> . • Italian garden. 4-tier topiary, left. Tall thimble-shaped topiary directly behind mushroom-shaped	
—	—	4783, 4784. Paradise on Earth. See 133.	
132	I-88	4788. Beautiful. • Sc•Bb•2s•Cft•Cft•C . Holder: UCR. • Italian garden. 2 topiary tiers, left; 5 tiers, right. More tall topiaries. Lakeside balustrade & small part of lake, left.	
—	—	5178. The Artists [sic] Retreat. See 137.	
2. B. W. Kilburn			26 issues
Benjamin West Kilburn, after Edward retired circa 1875. Issued late 1880s–1890s. Marked <i>B. W. Kilburn</i> , usually both recto & verso. Some also marked with the name of Kilburn agent James M. Davis, suggesting he was the photographer, or original issuer, or both; the publishing and business arrangement is unclear. These views are marked herein "In Davis's catalog" (shown on National Stereoscopic Association Web site). Some cards copyright 1888, 1891, 1892, or 1895; others no copyright year.			
—	—	4066. I dream of the beautiful the Great Unknown. See 131.	
133	I-89.1	4783. Paradise on Earth. • Sf•Bb•2s•Cft•Cft•C . • Copyright 1888. • Rhododendron tent interior. Walks, small rustic tables, rhododendrons. Spiral staircase rising to circular platform with railing. White pole grazes right side of platform. Tent frame above. • Also issued as <i>Kilburn Brothers</i> numbers 4783, 4784.	

Cat. no.	Image no.	Card no.; subject caption. • Descriptor code; description; notes	Number of issues by maker <i>Shaded</i> entries are reissues or pirates
	I-89.2	Image variant. • Sc•Bb•2s•Cft•Cft•C. • <i>B. W. Kilburn</i> recto, <i>Kilburn Brothers</i> verso. • Like I-89.1, except 2 white pillars, one in front of left part of platform, the other at right margin.	
—	—	4788. Beautiful. <i>See</i> 132.	
134	I-90	4789. Happy, Happy Dream. • Sc•Bb•2s•C2t•Cft•C Sc•Bb•2s•Cft•Cft•—. Holder: AAS. • Italian garden. Low-level view, southwest. Lakeside path, lower right. Thin, thimble-shaped shrub in low circle of decorative plants, left of center. Topiaries in profusion. Towering 9-level topiary, right. Similar topiary almost as tall, partly hidden behind. Scattered conifer trees in distance, upper left. Deciduous trees against sky, upper right.	
135	I-91	4841. Subject caption unknown. • Sc•Bb•2s•Cft•Cft•?. Holder: HNE. • Front estate? Beds, shrubs, walk, drive.	
136	I-92	5177. The dream of the Artist. • Sc•Bb•2s•Cft•Cft•C. • Italian garden. Small part of east parapet hedge, lower left corner. 2 conical topiaries, the right one with ball on top. Topiaries throughout. Deciduous trees in distance, right. Tiny bit of lake, right margin.	
137	I-93	5178. The Artists [sic] Retreat. • Sc•Bb•2s•Cft•Cft•C. • Marked <i>Kilburn Brothers</i> . • Italian garden. Small part of hedge, lower left. Tops of conical & cylindrical topiary, right. Topiaries, left. Lake, boathouse.	
138	I-94	5179. Subject caption unknown. • Sc•Bb•2s•C2t•Cft•?. Holder: HNE. • View from Wellesley College. Italian garden across lake. <i>138 & 247 are the only known stereo views showing Italian garden from college.</i>	
139	I-95	6747. Poetic Dream. • Sc•Bb•2s•C2t•Cft•—. Holders: HNE, UCR. • Italian garden. Corner of step; urns. Conical topiaries in profusion, some fanciful. Part of viewing pavilion through deciduous tree.	
140	I-96	6748. Poetic Dream. • Sc•Bb•2s•C2t•?•—. • Italian garden. View northeast. Curve connecting east & west terraces. East terraces, long topiary hedge with rising mature & multi-tier shapes, receding. Exotic tall slender topiaries; lake in haze.	
—	—	6749. “Sweet Companions.” • Plant conservatory interior, detail. Believe not Hunnewell estate.	
141	I-97.1	6753. Grandfather’s Darling. • Sc•Bb•2s•C2t•Cft•C. Holder: AAS. Illustrated: Luedke (see sources ↑). • Marked <i>B. W. Kilburn</i> . • Italian garden. Topiaries, one with 9+ tiers. Nursemaid, woman, toddler with toy cart. Topiaries far left tilted. Why?	
	I-97.2	Like I-97.1, except different poses.	
142	I-98	6754. The Pride of Wellesley. • Sc•Bb•2s•C2t•Cft•B. Holders: AAS, BA, HNE, WC, WHS. • Italian garden. Yuccas in pots. Receding west walk with persons. Thin conifers in tubs.	

Cat. no.	Image no.	Card no.; subject caption. • Descriptor code; description; notes	Number of issues by maker <i>Shaded</i> entries are reissues or pirates
143	I-99	6755. The Pride of Wellesley. <i>Also known numbered 6756.</i> • Sc•Bb•2s•C2t•Cft•C. • Italian garden. Prominent pyramidal topiary, left. Thin conical topiaries in profusion.	
—	—	7819. Happy Days. <i>Same caption as Kilburn 10328, 10338, but non-Hunnewell subject.</i>	
144	I-100	8504. Subject caption unknown. • Sc•Bb•2s•C2t•Cft•?. • Back estate. Tree limb, walk. Beds, tent frame in distance.	
145	I-101	10326. Moonlight Reveries. • Sc•Bb•2s•C2t•Cft•C. • Italian garden. Tall conical topiaries, center & left center of image. Lake occupies much of distance. Small boat shed, right distance. Stone Hall on horizon. Yuccas, lower margin. Man (estate 1st head gardener Frederick L. Harris?) standing, $\frac{3}{4}$ left, lower right.	
146	I-102	10327. Moonlight Reveries. • Sc•Bb•2s•C2t•Cft•C. Holders: AAS, UCR. • Like 145, except single tall conical topiary beyond, center; more tall conical topiaries, left; part of rhododendron, lower left corner; and bit of stone stairway, lower right corner. Man (Harris?) from rear, at a distance, right. Modest part of lake in distance, left. Small boat shed in distance, left of center.	
147	I-103	10328. Happy Days. • Sc•Bb•2s•C2t•Cft•C. Holder: UCR. • Italian garden. Yucca in urn isolated in deep shadow. Receding west walk. Women, children. Tiny bit of lake, right margin. • Kilburn 7819 & 10338 have same subject caption as 147.	
148	I-104	10329. I Dream of the Beautiful, the Hope that is to come. • Sc•Bb•2s•C2t•Cft•C. Holders: AAG, AAS, UCR. • Italian garden, low-level view. Thimble-shaped topiary, 5 topiary tiers directly behind. Man in white suit. Topiaries.	
149	I-105	10330. I Dream of the Beautiful, the Hope that is to come. • Sc•Bb•2s•C2t•Cft•C. Holder: AAS. • Italian garden. West walk. Top of conical topiary. Man in white suit. Potted conifers. <i>Topiary ruins</i> hedge, end-on, left of walk in distance.	
150	I-106	10331. Sweet Dreams. • Sc•Bb•2s•C2t•Cft•C. Holders: AAS, UCR. • Italian garden. Topiaries in profusion. Boathouse.	
151	I-107	10332. Sweet Remembrance. • Sc•Bb•2s•C2t•Cft•C Sc•Bb•2s•C2t•Cft•—. • Also known numbered 11132. • Italian garden. Bit of steps, potted yuccas. Woman & large group of children in fancy dress, right. Topiaries in profusion, many fanciful. Lake, small boat shed in distance. • Illustrated in catalog intro ↑.	
152	I-108	10333. Recreation. • Sc•Bb•2s•C2t•Cft•C. • Italian garden, low-level view. Group, some reclining. 2 short conical topiaries. Other topiaries.	
153	I-109	10334. Creators of the Beautiful. • Sc•Bb•2s•C2t•Cft•B. Holder: UCR. Illustrated in catalog intro and Luedke ↑. • Italian garden. Estate 1st head gardener Frederick L. Harris, left; estate founder H. H. Hunnewell, right. Faint College Hall in distance. • <i>Only known stereo view showing H. H. Hunnewell.</i>	

Cat. no.	Image no.	Card no.; subject caption. • Descriptor code; description; notes	Number of issues by maker <i>Shaded</i> entries are reissues or pirates
154	I-110	10335. I stood in the Realms of Beauty, overpowered with thoughts of the Higher. • Sc•Bb•2s•C2t•Cft•C. Holders: AAG, UCR. • Italian garden. Part of pyramidal topiary, left corner. Bit of boathouse, tiny bit of lakeside balustrade & lake, far right.	
155	I-111	10336. Our Home Circle. • Sc•Bb•2s•C2t•Cft•C. • Italian garden. View southwest, low-level. Group of persons. Topiaries & steps. Indentations of <i>topiary ruins</i> hedge obliquely, top.	
156	I-112	10337. The Hill of Life made easy. • Sc•Bb•2s•C2t•Cft•C. • View straight-on at Italian garden. Lower part of long stone steps. Urns, women, children, topiaries.	
157	I-113.1	10338. Happy Days. • Sc•Bb•2s•C2t•Cft•C. • English garden on back estate. Walk, obliquely, left. Child in white. More children beyond. Hedge arches & tent frame in distance. • Kilburn 7819 & 10328 have the same subject caption as 10338.	
	I-113.2	Image variant • Like I-113.1, except different poses.	
158	I-114.1	10339. Paradise on Earth if Possible. • Sc•Bb•2d•C2t•Cft•C Sc•Bb•2s•C2t•Cft•C. • Conservatory interior. Left edge of aisle crosses center of image. Tropical plants in profusion. Statue of goddess Flora in arch in distance.	
	I-114.2	10339. Paradise on Earth if Possible. • Like I-114.1, except closer or enlarged. Left edge of aisle, right of center of image.	
158A	—	10340. Home of the orchids. • View not seen. Unknown if original view or a reissue. • Inside conservatory.	
—	—	11332. Sweet Remembrance. See 151.	

Lewis, Thomas

Listed Cambridgeport, Cambridge, Mass., 1875–1880; Foxborough, Mass., 1887–1894 (Polito, pp. 196, 252). View marked with series name *Wellesley College*. Period of view consonant with 1875–1880. No known views by Lewis were made on a Hunnewell property. No subject caption.

159	I-115	Distant view of Italian garden. • Sf•Ob•2d•Cft•—•—. Holder: WC. • From Wellesley College shore across small part of Lake Waban. Boathouse, far right.	
—	—	Wellesley College series • View across minor lagoon of Lake Waban near Hunnewell estate. Round decorative beds on shore, foreground. College Hall in distance, but believe no part of estate visible. • College holds a single, non-stereo photo of this image (wider-angle, ergo apparently printed from the original stereo negative. Based on stated dimensions, a contact print). Ascribed title “College Hall from Hunnewell Gardens” seemingly wrong; more likely college president’s property. Hunnewell estate faces campus across main part of lake, not lagoon; Italian garden lakeside balustrade absent here.	

Cat. Image		Card no.; subject caption.	Number of issues by maker
no.	no.	· Descriptor code; description; notes	<i>Shaded</i> entries are reissues or pirates
Littleton View Co.			11 issues
George Bellows (1855–1900), William Henry Bellows (1852–1929), & John Ready (?–?), Littleton, New Hampshire. Extant 1883–1900. Views made circa late 1880s–early 1890s. Earlier cards are marked <i>Littleton View Co.</i> on left, <i>Stereoscopic Treasures</i> on right, with picture graphic. Some cards marked <i>Littleton View Co.</i> and <i>Underwood & Underwood</i> . Subject caption usually misspelled <i>Wellsley</i> . On later cards, photographic quality mediocre to poor.			
160	I-116	1190. Hunnewell's Residence, Wellsley, [sic] Mass. · Sc•Cc•2d•Cft•Cft•– . Holders: AAS, NYPL, WHS. · Bit of curved walk, left; lawn & slope. Rear of conservatory & house. Awnings open.	
161	I-117	1191. Hunnewell Jr's Residence, Wellesley, Mass. · Sc•Cc•2d•C?t•Cfh•– . Holders: AAS, NYPL. · Estate of Walter Hunnewell (1844–1921), 5th child of H. H. & Isabella Hunnewell, looking east. Formal walks, shrubs. House with steeped gable in distance. · Subject caption inaccurate. Walter was not styled <i>Jr.</i> · <i>The only known stereo view of a Hunnewell property other than H. H. Hunnewell estate.</i>	
162	I-118	1192. Hunnewell's Italian Garden, Wellsley, Mass. [sic]. Capitalization varies. · Sc•Cc•2d•Cbt•Cft•– Sc•Cc•2d•Cft•Cft•– . Holders: AAS, HNE. · Capstone, miscellaneous shrubbery, lower right. Lake. Lakeside balustrade across almost entire view. Opening in lakeside balustrade. East terraces & topiaries in distance. · Like 130, except no person on steps, and reflection in lake undisturbed.	
163	I-119	1192. Hunnewell Jr's Italian Garden, Wellsley, [sic] Mass. · Sc•Cc•2d•C?t•Cft•– . Holders: AAS, NYPL. · Different image than 162. Corner of walk, grass & conical shrubs. Long topiary hedge with rising topiary shapes. East observation walk with balustrade & urns in distance. At bumpout in balustrade, viewing pavilion not yet built. · Subject caption inaccurate. Walter was not styled <i>Jr.</i>	
—	—	1193. Exists?	
164	I-120	1194. Wellsley [sic] College from Hunnewell's Italian Garden, Mass. · Sc•Cc•2d•C?t•Cft•– . Holders: AAS, NYPL. · Lawn, small thin topiaries. Lakeside drive; lower left to upper right. Elaborate tall thin topiaries. Stone Hall in distance.	
165	I-121	1195. Subject caption unknown. · Sc•Cc•2d•C?t•Cft•– Sc•C•2d•—•—•— . · Back estate. Tall narrow hedge arch. A few shrubs visible through arch, beyond. 2nd arch in distance. · No printing on card. Card number in pencil, recto.	
166	I-122	1196. Avenue, Hunnewell's French [sic] Garden, Wellsley, [sic] Mass. · Sc•Cc•2d•C?t•Cft•– . Holder: NYPL. · Back estate. Vicinity of English garden. Holly Path, conifer shrubs either side. High hedge, right. 3 persons on walk.	
—	—	1197. Exists?	
167	I-123	1198. Subject caption unknown. · Sc•Cc•2d•C?t•Cft•– . Holders: AAS, HNE. · English garden on back estate. Fancy beds. Double hedge arches & tent frame in distance.	
168	I-124	1199. In Hunnewell's French [sic; English] Garden. · Sc•Cc•2d•C?t•Cft•– . Holders: AAS, HNE. · English garden on back estate. Tall succulent in round bed. Double hedge arches & part of rhododendron tent frame in distance.	

Cat. no.	Image no.	Card no.; subject caption. • Descriptor code; description; notes	Number of issues by maker <i>Shaded</i> entries are reissues or pirates
----------	-----------	---	--

169	I-125	1200. Foliage in Hunnewell's Garden. Wellsley, [sic] Mass. • Sc•Cc•2d•C?t•Cft•- . • Presume front estate. Tropical fronds on ground, close up. Remarkably nondescript view.	
170	I-126	1217. View in Hunnewell's French [sic] Garden, Wellsley, [sic] Mass. • Sc•Cc•2d•C?t•Cft•- . Holders: AAS, NYPL. • English garden on back estate. Massive shrub, left. Part of white-pebble-bordered round bed. Rododendron tent frame & tall hedge arch in distance.	

Perry Mason & Co.			
Active circa 1870s. Pirate maker? Seller, not maker? Marked <i>Youth's Companion</i> and <i>41 Temple Place, Boston, Mass.</i>			
171	I-183	Card number & subject caption, if any, unknown. • S?•?•1s•Cft•Pt•? . • Reissue or pirate of 228 (Seaver).	

<i>Miscellaneous Subjects</i> see American Scenery Co.			
<i>New Series</i> see Ingersoll, T. W.			
<i>"Perfec" Stereograph</i> see White, H. C.			
<i>Platino Stereograph</i> see Graves, C. H.			
Pollock, Charles see Seaver, Chandler, Jr.			

Randall Brothers			
Listed Natick, Mass., 1871–1873 (Polito, p.362). Cards look approx. consistent with that period. Marked <i>Randall, [sic; comma] Bros., / Natick, Mass.</i> No subject caption.			
Italian garden			
172	I-127.1	• Top 2 tiers, topiary tree, bottom left. • Sf•Yy•2s•Cbt•-•- Sf•Yy•2s•Cbt•-•- . Holder: NHS. • Young topiaries throughout. West terraces; 2 bare unplanted terraces beyond steps. Shadows on terrace 2 at 2:00. Shadow on terrace 3 barely touches top of thimble-shaped topiary on terrace 2. Lake & boathouse absent. • Reissued or pirated as 71 (issuer unknown).	
	I-127.2	Image variant. • Known only as reissue or pirate (71). Unknown whether variant issued by Randall and 71 is only a copy, or 71's maker derived it themselves.	

Rau, William H.			
William Herman Rau (1855–1920), Philadelphia, Pennsylvania. Marked <i>William H. Rau</i> and <i>Universal View Co.</i> Copyright 1903.			
Italian garden			
173	I-128	The Artist's Paradise, Hunnewell's Gardens, Wellesley, Mass. • Sc•Gg•1d•Cft•Cft•- Sc•Gg•1d•Cfh•Cfh•- . Holders: LC, UCR. • Walk, west slope. Plants. Man with foot on stone curb. Tiny part of lake, right margin. • Photos sometimes light or faded. • Reissued or pirated as 116 (Kelley & Chadwick).	
174	I-129	Evergreen Terrace of Hunnewell's Beautiful Gardens, Wellesley, Mass. • Sc•Bb•1d•Cft•Cft•- Sc•Bb•1d•Cfh•Cfh•- . Holders: LC, UCR, WHS. • Lakeside balustrade curving across image. East terraces with mature topiaries. Viewing pavilion in distance, upper right.	

Cat. no.	Image no.	Card no.; subject caption. • Descriptor code; description; notes	Number of issues by maker <i>Shaded</i> entries are reissues or pirates
175	I-130	Hunnewell's Gardens, The Splendid Creation of a Lover of Nature, Wellesley, Mass. • Sc•Gg•1d•Cft•Cft- Sc•Gg•1d•Cfh•Cfh- . Holder: LC. • High view west. Long lens? Small top of conical topiary, 6 tiers of tall topiary. Far end of west terraces & 4 white step-side pedestals, left. Deciduous tree, center; lakeside balustrade; lake; boathouse, right. Lake shore in distance.	
176	I-131	Hunnewell's Splendid Italian Gardens, Wellesley, Mass [sic] • Sc•G?•1d•Cft•Cft- Sc•G?•1d•Cfh•Cfh- . Holder: LC. • Tops of rounded topiaries, bottom. Tall topiaries. Bit of lakeside balustrade in distance, center. Lake; opposite shoreline; 1 or 2 Wellesley College bldgs., in distance.	

Seaver, Chandler, Jr.

89 issues total

Boston area. Born 1824 Colrain, Mass.; died 1902 Barnstable, Mass. Called *Charles* by some sources; reason unknown. Most prolific stereographer and most prolific non-stereo photographer of H. H. Hunnewell estate. Listed in Boston, 1856–1865 (Polito, p.118), and other Mass. localities: Grantville (part of the West Needham precinct of Needham), circa 1870–1880 (Polito, pp. 263–363); Newton (briefly Newton Centre, then West Newton), 1879–1897 (p.385); Pittsfield, 1868–1872 (p.406); and Barnstable, Cape Cod 1901 (p.16). In 1881 West Needham broke from Needham and became Wellesley, at which time Grantville became the Wellesley Hills part of Wellesley.

All Hunnewell views believed made early 1870s. All believed printed & published by Charles Pollock (1828–1900) of Boston. About 1874 Pollock opened a stereo manufactory in Foxborough, Mass. Whether any of Seaver's views were ever printed there is unknown. Most cards have a copyright statement. When a year is named, it is always 1872. The statement usually names *Pollock* and *Seaver*, but sometimes one name only. Some cards have no copyright statement.

On all Hunnewell cards, the recto (front) of the card is colored—yellow, salmon, or peach. The verso (back) is usually uncolored. In some cases, across it is a colored pattern of small parallelograms and diamonds, leaving a narrow white border all round. On cards with a yellow recto, the verso pattern is blue. On cards with a salmon or peach recto, the verso pattern is salmon or peach accordingly.

Some copies are affixed on the verso with stationer J. B. Fairbanks and Sons, Natick, Mass. seller's adhesive stamp, perforated, black on white (one copy known black on orange). Other sellers' stamps known too.

1. Charles Pollock—Vicinity of Boston – Park and Garden Series

84 issues

Usually marked *Park and Garden Series*. vertically in left margin, *Vicinity of Boston* in right, but sometimes swapped. No subject caption on any card.

Back estate

177	I-132	Intersection of 2 drives. • Sf•Px•2d•Cft•-•? . Holder: NYPL. • Southwest of mansion house. High hedge, left. Receding drive. Hedges & trees. Carriage house with 2 doors (one partly open) & cupola.	
178	I-133	Lawn & 3 semi-tropical plants. • Sf•Px•2d•Cft•-•- Sf•Y#•2d•Cft•-•C. • The right-most with 3 large compound fronds. Long receding bed, left margin. Round beds, center. Farther: High hedge across entire image, double in places; top of greenhouse w. top window open, far left; carriage house through trees, center.	
179	I-134	Receding walk. • Sf•Y#•2d•Cft•-•- . • High hedge with arch. Another high hedge, through arch, in distance.	

Cat. no.	Image no.	Card no.; subject caption. • Descriptor code; description; notes	Number of issues by maker <i>Shaded</i> entries are reissues or pirates
Boathouse <i>180–182 are the only known close-in views of boathouse.</i>			
180	I-135	Diagonal dirt & gravel walk, foreground. • Sf•Px•2d•Cft•— Sf•P#•2d•Cft•—? Sf•Y#•2d•Cft•—, Holders: AAS, HNE. • Boathouse mid-distance. Flight of stairs on side facing camera. 2 tall trees, right. Lake beyond.	
181	I-136	Interior of boathouse. • Sf•Y#•2d•Cft•—B. Holders: AAS, BA. • Bench; 3 pillars. Italian garden in distance.	
182	I-137	View possibly from lake. • Sf•?•2?•Cft•—?. • Or from corner of Italian garden, looking in.	
Conservatory—Exterior—Front			
183	I-138	Drive. • Sf•Px•2d•Cft•—,. • Seaver (?) in boater-like hat.	
184	I-139	Extending to right from mansion house. • Sf•Px•2d•Cft•—? Sf•P#•2d•Cft•— Sf•Y#•2d•Cft•— Sf•P#•2s•Cft•—?. • Holders: AAS, HNE, WHS. • Corner of dark shrub, left. Receding stone curbing wall with yuccas in 2 ornate urns. End of conservatory. Considerably more shrub visible in left than in right photo.	
185	I-140	Tropical shrub, left foreground. • Sf•Px•2d•Cft•—? Sf•Yy•2d•Cft•—? Sf•Y#•2d•Cft•—? Sf•P#•2d•Cft•—,. • Holders: AAS, HNE, NYPL. Ex Treadwell. • Lawn, curving walk. Part of balustrade with 2 urns, yuccas. Corner of house, left margin.	
Conservatory—Exterior—Obliquely			
186	I-141	Shrub at left; lawn. • Sf•Y#•2d•Cft•—C Sf•?•2d•Cft•—,. • Conservatory keystoned, pillars leaning outward. Part of house, left.	
Conservatory—Exterior—Rear			
187	I-142	Lawn. Two walks joining, lower right. • Sf•Px•2d•Cft•—? Sf•P#•2d•Cft•—? Sf•Y#•2d•Cft•—?. Holders: AAS, HNE. • Conservatory extends obliquely left toward camera. Rear of house. Awnings open. • Cropping varies.	
Conservatory—Interior			
188	I-143	Tropical fronds & ferns. • Sf•Px•2d•Cft•—? Sf•P#•2d•Cft•—? Sf•Y#•2d•Cft•—? Sf•Yx•2s•Cft•—B. • Holders: AAS, HNE, NHS. NHS copy with orange J. B. Fairbanks (Natick, Mass.) adhesive seller's stamp, perforated, on verso. • Out-of-focus at left & right margins. Statue of goddess Flora standing, draped, on classical square plinth. 2 pillars in distance. Edge of sliding door in distance, left & right margins. Foliage	
Cottages—Head gardener's cottage			
189	I-144	Drive, foreground. • Sc•Y#•2d•Cft•—,. • Holder: HNE. • Designed by H. H. Hunnewell. 2 windows on front. Covered front portico merges with gable above. Toddler, in white, on porch. Cottage greatly enlarged in 20th century.	

Cat. no.	Image no.	Card no.; subject caption. • Descriptor code; description; notes	Number of issues by maker <i>Shaded</i> entries are reissues or pirates
Cottages—Lower entrance lodge			
190	I-145	Gateway with 2 tall & 2 short columns. • Sf•Y#•2d•Cft•—•—. • On Washington Street. Triangular dormers. Gate closed. Faint smoke, blurred by long camera exposure, rising from right chimney pot.	
191	I-146	Image variant. • Sf•Px•2d•Cft•—•? Sf•Y#•2d•Cft•—•C. Holders: AAS, HNE. • Like 190, except different season; one gate door open.	
Cottages—Upper entrance lodge			
192	I-147	Low stone wall in front. • Sf•Px•2d•Cft•—•—. • Washington Street. Arched central dormer. • <i>The only known original stereo view of this subject.</i> • Reissued or pirated as 12 (American Scenery).	
Front estate			
193	I-148	Bed of succulents. • Sf•P#•2d•Cft•—•B. • Walk crossing transversely. Lawn; bed; large, possibly semi-tropical shrub. Lower part of deciduous shade trees, upper distance. • Cropping varies. Known handwritten on recto: <i>Hunnewells</i> [sic] <i>House Leeks</i> , the plant commonly called <i>hens and chickens</i> .	
194	I-149	Front lawn. • Sf•Y#•2d•Cft•—•—, Holders: HNE, WHS. • Corner of round bed with large tropical fronds. Deciduous branches, upper left corner. Round bed. Corner of house, part of conservatory, & line of decorative urns in distance, left.	
195	I-150	Front lawn. • Sf•Px#•2d•Cft•—•—, Holder: NYPL. • Large round bed; large tropical fronds beyond. 2 deciduous trees in distance. • Handwritten <i>Hunnewells</i> . [sic] on recto.	
196	I-151	Front lawn. • Sf•Y#•2d•Cft•—•—. • Large tropical fronds, left; yucca, right. Curving drive beyond, right. Plantings in distance.	
197	I-152	Front lawn. • Sf•Y#•2d•Cft•—•—. • Receding long bed with 3 contrasting bands of plants. Receding round beds.	
198	I-153	Front lawn. • Sf•Y#•2d•Cft•—•—. • Rectangular bed of succulents. Curving drive, receding left to right. Round beds beyond. Trees in distance.	
199	I-154.1	High view. • Sf•P#•2d•Cft•—•? Sf•Yx•2d•Cft•—•—, Holder: AAS. • From front portico roof. Front lawn. Bit of balustrade left & right. • Normal lens. Oval path around bed extends across most of image. • Known handwritten on recto: <i>Hunnewells</i> [sic] <i>from Front Entrance</i> .	
199A	I-154.2	Image variant. • Sf•Px•2d•Cft•—•? Sf•Yx•2d•Cft•—•—, Holder: AAS. • Same camera position as 199, except wide lens or enlarged from same negative; and oval path around bed small in image.	

Cat. no.	Image no.	Card no.; subject caption. • Descriptor code; description; notes	Number of issues by maker <i>Shaded</i> entries are reissues or pirates
200	I-155	Looming yucca. • Sf•?•2d•Cft•-•?. • Rectangular bed; drive. • Ex Lowden.	
201	I-156	Round bed. • Sf•Pp•2d•Cft•-•- Sf•P#•2d•Cft•-•? Sf•Y#•2d•Cft•-•C. Holder: HNE. • Beds, front steps, plantings, decorative urns. Conservatory, part of house in distance, left. • Cropping varies.	
202	I-157	Walk. • Sf•Px•2d•Cft•-•- Sf•P#•2d•Cft•-•- Sf•Y#•2d•Cft•-•-. • On verso of one copy, in pen, possibly by different persons: <i>Wellesley Mass</i> [sic] / 1872 / <i>Gift of Henry S. Ruggles / 14 April 1923 / 121</i> (meaning unknown). Ruggles, a genealogist acknowledged in Hunnewell's <i>Life, Letters and Diary</i> , 1906, contributed in its preparation. • Receding through rectangular stone portal, looking southeast toward Washington Street. Woodland growth either side. Part of shallow open, peaked-roof structure in distance. • 94, 202 the only known stereo views of portal. 202 the only known view with a Hunnewell provenance.	
203	I-158	Yucca. • Sf•Px•2d•Cft•-•- Sf•Y#•2d•Cft•-•-. • In a circle of large succulents, in round flower bed. Strip of lawn. Large tropical fronds in bed in distance.	
House			
204	I-159	Curving lawn terrace. • Sf•Px•2d•Cft•-•? Sf•P#•2d•Cft•-•? Sf•Yx•2d•Cft•-•-. Holders: AAS, HNE. • Rear of house obliquely, from north. 6 awnings open. 2-story, partly enclosed porch-like addition on rear. Parterre area balustrade with opening. Tiny 2-tier fountain, far right.	
205	I-160	Junipers on lawn. • Sf•P#•2d•Cft•-•- Sf•Y#•2d•Cft•-•-. Holder: HNE. • Curving drive; side of house from northeast, upper-story awning open. Tall pointed conifer behind part of deciduous tree, right. Conservatory not visible.	
206	I-161	Lawn & small tree. • Sf•Y#•2d•Cft•-•-. Holder: HNE. • <i>Auricaria</i> (monkey puzzle tree), far right. House, part of conservatory, bit obliquely. Awning above front portico open.	
207	I-162	Much lawn. • Sf•P#•2d•Cft•-•-. Holders: AAS, HNE. Illustrated: Emmet, p.85 (see sources ↑). • House; conservatory, face-on. Upper-story awning open.	
208	I-163	Part of leafy shrub, far left. • Sf•P?•2d•Cft•-•- Sf•Y#•2d•Cft•-•-. • Detail of house, left, with central circular bump-out, square portico, striped awning above portico, bit of wing either side of bump-out. Front drive. Large white urns in distance.	
209	I-164	Sweeping drive. • Sf•P#•2d•Cft•-•C Sf•Y#•2d•Cft•-•-. Holders: AAS, NHS. • Lawn, right. House obliquely, looking west. Front portico, far left. Upper-story awning open. Conservatory extends obliquely forward to right margin. Dark round shrub & <i>Auricarias</i> (monkey puzzle trees) in square containers. Straight lines in image somewhat keystoneed.	

Cat. no.	Image no.	Card no.; subject caption. • Descriptor code; description; notes	Number of issues by maker <i>Shaded</i> entries are reissues or pirates
		Italian garden—Estate level (above garden)	Total Italian garden: 39 issues
210	I-165	Lawn & two short 2-tier topiaries. • Sf•Y#•2d•Cft•—•C. Holder: NYPL. • Lion statue, far left. Yucca in urn, center. Various free-growth trees in distance.	
211	I-166	Walk bordering front lawn. • Sf•Y#•2d•Cft•—•C. • Tropical plants in round bed. Tops of topiaries, rising from garden slope hidden from camera. Lion statue in distance, right. Lake barely visible in distance, left. Shore just visible in distance.	
		Italian garden—High views; lake in center, or across view in distance	
212	I-167	Expanse of bare walk. • Sf•Px•2d•Cft•—•? Sf•P#•2d•Cft•—•? Sf•Yx•2d•Cft•—•—. • Deliberate recreation of Downing—Sargent Plate V engraving? (See catalog intro ↑). • Small triangular topiary with hole, left. Classic bicycle-spanner-shaped topiary, right. Mushroom topiary tree, far left. Man (Seaver?) in top hat, from rear, on bench, far right. • Same camera position as 215, except normal (or a bit wider) lens; dirt path takes up 1/5 of image at bottom. • Illustrated: Luedke (see sources ↑). • Reissued or pirated as 14 (American Scenery).	
213	I-168	Part of conical topiaries, lower left & right. • Sf•Y#•2d•Cft•—•?. Holder: HNE. • Short conical arbor vitae topiary, bottom center. Part of mushroom tree, upper left margin. Plants in urns. 2nd mushroom tree, right. Lake, lake shore, & College Hall in distance. • Reissued or pirated as 15 (American Scenery).	
214	I-169	Part of walk. • Sf•P#•2d•Cft•—•? Sf•Y#•2d•Cft•—•—. Holders: AAS, BA, HNE, NHS, NYPL. • Shadow of conical topiary coming into image, lower right corner. Looming flat mushroom-shaped topiary tree, center. Cacti, yucca in decorative urns. Lake, shoreline in distance. • Reissued or pirated as 1 (American Views); 13 (Amer. Scenery); 106 (Griffith & Griffith).	
215	I-170	Small triangular topiary with hole, left. • Sf•Px•2d•Cft•—•? Sf•P#•2d•Cft•—•— Sf•Y#•2d•Cft•—•? Sf•Y#•2s•Cft•—•?. • Holders: BPL, HNE. • Classical-bicycle-spanner-shaped topiary, right. Topiaries fill image. • Same camera position as 212, except longer lens or enlarged from same negative.	
216	I-171	Wide lens. • Sf•Y#•2d•Cft•—•—. Holder: AAS. • Top of arbor vitae hedge on east slope across entire image. Topiaries. Lakeside balustrade & lake in distance. Man in dark suit, top hat, leaning on lakeside balustrade, 1/3 from left margin. Anchored rowboat or canoe in lake in distance, center. College Hall, at its future location, absent.	
		Italian garden—High views; terraces descending left to right; lake not visible	
217	I-172	Dark urn & pedestal over 3 wooden steps, center. • Sf•Px•2d•Cft•—•— Sf•Y#•2d•Cft•—•C Sf•Yx•2d•Cft•—•?. Holders: AAS, BA, HNE. • Three more light-colored urns, pedestals. Receding west walk, right. Thin conifers in tubs along walk. East terraces & hedges in distance.	

Cat. no.	Image no.	Card no.; subject caption. • Descriptor code; description; notes	Number of issues by maker <i>Shaded</i> entries are reissues or pirates
218	I-173	<i>Small deciduous tree in round bed.</i> • Sf•P#•2d•Cft•—• Sf•Y#•2d•Cft•—• Sf•Px•2d•Cft•—•? . Holder: NHS. • Of fern-like plants, center. Corner of steps with yucca in urn, lower right corner. Receding long topiary hedge with protruding cones. Dark parapet hedge, upper right. • Cropping varies. • Reissued or pirated as 3 (American Views); 16 (American Scenery).	
Italian garden—High views; terraces ascending left to right; lake L			
219	I-174	<i>Fern-like plants in round bed.</i> • Sf•Y#•2d•Cft•—•C . Holder: AAS. • Small round deciduous topiary tree. Receding east hedge with rising topiary cones. Lake & shore in distance.	
220	I-175	<i>Looming elongated thimble-shaped topiary, center.</i> • Sf•Px•2d•Cft•—•? Sf•P#•2d•Cft•—• Sf•Yx•2d•Cft•—•C Sf•Y#•2d•Cft•—•C . • Holders: BA, HNE. • Part of 3 wooden steps, corner of lakeside balustrade. Several pedestals with urns. Plant in topmost urn only. Lakeside drive & balustrade in distance, far left. Part of east terraces & hedges in distance, center & right.	
221	I-176	<i>Mushroom topiary tree prominent, left foreground.</i> • Sf•P#•2d•Cft•—• Sf•Y#•2d•Cft•—•C . Holder: BA. • Sunlit walk receding, foreground to mid-distance, to 8 stone steps. 8 urns with plants visible. Bit of lake, left.	
222	I-177.1	<i>Normal lens.</i> • Sf•Y#•2d•Cft•—•B . Holder: NYPL. • Dirt walk, lower right corner. Depending on cropping, about 3 to 8 crab-like growths along edge of walk. 3 small topiaries, ascending left to right in distance. Lakeside drive, lakeside balustrade, & lake prominent in distance, left; east terraces & hedges in distance, center & right. • Cropping varies. • Reissued or pirated as 17 (American Scenery); 2 (American Views); 68 (issuer unknown).	
	I-177.2	• Sf•Y#•2d•Cft•—•? . Holders: AAS, BA. • Like I-177.1, except wide lens. Dirt walk, lower right, with many small crab-like growths on edge of walk. Prominent topiaries ascending left to right. Drive; lakeside balustrade with plants in urns thereon & alongside. Much of right terraces & hedges in distance, center & right. • Reissued or pirated as 69 (issuer unknown).	
223	I-178	<i>Top of dark urn, lower left corner.</i> • Sf•Y#•2d•Cft•—•B . • Cacti in 3 light-colored urns, left. Large corner of west walk, lower right. Topiaries below camera level. Lake in distance, left. East terraces, hedges in distance, far right.	
224	I-179	<i>Wide lens.</i> • Sf•P#•2d•Cft•—•? . Holders: AAS, NYPL. • Top of pedestal, lower left; hedge. Terraces & topiaries. Boathouse in distance. Yucca visible or not, depending on cropping.	
225	I-180	<i>Wide lens.</i> • Sf•Px•2d•Cft•—•? Sf•Yx•2d•Cft•—•? Sf•Y#•2d•Cft•—•C . • Holders: AAS, BA, HNE, NHS, WHS. • Very long receding west walk, upper right. 3 wooden steps in walk, right. Dark urn & pedestal on top. Small topiaries with 2, 2 & 4 tiers, ascending lower right to center. 2nd topiary in front of thimble-shaped topiary. Lake, lakeside balustrade, walk, east terraces & hedges in distance.	

Cat. no.	Image no.	Card no.; subject caption. • Descriptor code; description; notes	Number of issues by maker <i>Shaded</i> entries are reissues or pirates
Italian garden—High views; terraces descending left to right; lake right			
226	I-181	<i>Mushroom-shaped top of topiary tree.</i> • Sf•P#•2d•Cft•—•? . • Above slender bare trunk, leaning bit right. Edge of east topiary hedge, lower margin. Thimble-shaped protrusions from or behind hedge. Part of west terraces, left. Receding lakeside drive & lakeside balustrade, center. Good part of lake, right. Boathouse with clear reflection. • Reissued or pirated as 19 (American Scenery); 73 (issuer unknown).	
227	I-182	<i>Normal lens.</i> • Sf•P#•2d•Cft•—•C Sf•Y#•2d•Cft•—•B. Holders: AAS, HNE, NHS, WC. Ex Treadwell. Illustrated in catalog intro ↑. • Regimented west terraces recede dramatically from camera. Camera centered over terrace 4. Angled balustrade end, lower left corner. Shadows on terraces 4 & 3 point to 3:00–3:30. Small part of boathouse, right.	
228	I-183	<i>Like 227, except wide lens.</i> • Sf•Yx•2d•Cft•—•B Sf•Yx•2s•—•—•? . Holders: AAS, BA. Ex Treadwell. • Camera centered between terraces 4 & 3; bit of eastern slope topiary hedge diagonally across bottom; bit earlier in day; shadows point to 2:30–3:00." • Reissued by this maker as 260. Other reissues or pirates: 20 (American Scenery); 72 (issuer unknown); 104 (Griffith & Griffith); 171 (Perry Mason).	
	I-183	<i>Card variant.</i> • Sf•Yx•2d•Cft•—•B Sf•Yx•2s•—•—•? . Holders: AAS, BA. Ex Treadwell. • Card blank; maker's & series names absent. Maker's specimen? Reissue or pirate?	
229	I-184	<i>Like 228, except wide lens; camera moved left & turned right.</i> • Sf•P#•2d•Cft•—•? . • Only part of west walk, white, & part of balustrade section with only 1 statue. Much of lake & curving lakeside balustrade.	
230	I-185	<i>Top of round topiary tier.</i> • Sf•Px•2d•Cft•—•— . Holder: NYPL. • With small projecting sprig, lower right corner. Topiaries, lower left. Lakeside drive in distance, lower center & left. Lake & boathouse with clear reflection in distance, right.	
230A	I-185A	<i>View west from east slope.</i> • Sf•Yx•2d•Cft•—•— . • Tiny bit of wooden balustrade & urn with 3 long tropical fronds, lower left. Shrubs across bottom. Curving lakeside path, center & lower center. Highly regimented west terraces in distance, receding, 8:30–2:30. Lake & boathouse, far right.	
Italian garden—Lake in foreground, or taken from afloat on lake			
231	I-186	<i>Lake subtends about one-third of image.</i> • Sf•P#•2d•Cft•—•? . • Sky subtends about half. Massive deciduous tree, far right. Terraces with mostly young topiaries extend almost to left margin. Much of lakeside balustrade above lakeside field stone wall. Open section in lakeside balustrade. 13 or 14 urns on top of balustrade. Leftmost 1 or 2 balustrade pedestals w. no urns.	
232	I-187	<i>Like previous, except panned right.</i> • Sf•P#•2d•Cft•—•— . Holder: AAS. • Much of lake. Massive deciduous tree, center. Garden visible, left half of image. 3 multi-tier topiaries in break in deciduous trees, right; 8 urns visible on lakeside balustrade.	

Cat. no.	Image no.	Card no.; subject caption. • Descriptor code; description; notes	Number of issues by maker <i>Shaded</i> entries are reissues or pirates
233	I-188	<p><i>Oblique view, by lakeside balustrade.</i></p> <ul style="list-style-type: none"> • Sf•Px•2d•Cft•—• Sf•Yx•2d•Cft•—•? Sf•Y#•2d•Cft•—•C. Holders: HNE, NHS. • Bit of lake, lower left. Receding stone boundary wall, curving slightly, lower right corner to lower left margin. Balustrade with opening & wooden steps to water. Plants in 4 urns on balustrade. East terraces & topiaries in distance. • Known with J. B. Fairbanks (Natick, Mass.) adhesive seller's stamp, on verso. 	
234	I-189	<p><i>Some lake.</i></p> <ul style="list-style-type: none"> • Sf•P#•2d•Cft•—• Sf•Y#•2d•Cft•—•C. • Vertical white reflections in lake of 8 urns on lakeside balustrade. Balustrade with open section & white wooden steps to water. Much of east terraces with young topiaries. Topiary tree w. truncated conical base; 3 slender, widely-separated tiers, above, align with urn at right side of balustrade opening. Much of long east hedge with rising conical topiary shapes. Left part of top of garden marked partly by stone parapet wall, right part by high parapet hedge. Urns along entire top. 	
235	I-190	<p><i>Wide lens.</i></p> <ul style="list-style-type: none"> • Sf•Y#•2d•Cft•—•. • Camera well out on lake. Lake occupies about 2/7, sky about half, of image vertically. Most of garden visible. Profusion of uniform-looking young topiaries. All of west steps visible, right. 	
Italian garden—Low views, looking in; part of lakeside drive usually in foreground			
236	I-191	<p><i>Bed.</i></p> <ul style="list-style-type: none"> • Sf•Y#•2d•Cft•—•?. Holder: NHS. • Small conical tree. East slope with hedges in distance. • Known with J. B. Fairbanks (Natick, Mass.) adhesive seller's stamp, on verso. 	
237	I-192	<p><i>Lakeside drive.</i></p> <ul style="list-style-type: none"> • Sf•Px•2d•Cft•—•? Sf•Y#•2d•Cft•—•C. Holder: AAS. • Corner of rectangular bed, left. Small flight wooden steps, 2 pedestals with urns, right. Terraces w. topiaries. 	
238	I-193	<p><i>Part of walk & edge of terrace.</i></p> <ul style="list-style-type: none"> • Sf•Px•2d•Cft•—• Sf•Yx•2d•Cft•—•C Sf•Y#•2d•Cft•—•. • 2-tier topiary with small mushroom-shaped 2nd tier, left. Small, squat “witch’s hat”-shaped topiary, center. Part of flattened, cushion-like topiary, right. Part of tall thimble-shaped topiary behind. Terraces & topiaries. 	
239	I-194	<p><i>Rectangular bed, end-on.</i></p> <ul style="list-style-type: none"> • Sf•P?•2d•Cft•—•? Sf•Y#•2d•Cft•—• —. Holder: NYPL. • On lakeside drive, occupying lower half of image. Round flat conifer topiary; clump of deciduous leaves behind. Emerging conical topiary farther behind. Bit of lower west terraces obliquely in distance, right. East terraces with relatively young topiaries. 	
240	I-195	<p><i>Two small squat topiaries, left & right.</i></p> <ul style="list-style-type: none"> • Sf•Y#•2d•Cft•—•C. Holders: AAS, HNE. • Small topiary with hanging wreath, left. Tall 5-tier topiary, center. Terraces & topiaries. 3 persons with 2 parasols, upper right. • Reissued or pirated as 45 (Stereoscopic Studies). 	
241	I-196	<p><i>Like 240, except wide lens.</i></p> <ul style="list-style-type: none"> • Sf•P#•2d•Cft•—•. • Part of lakeside drive, edge of terrace one. No person in distance. • Handwritten on recto <i>Hunnewells</i>. [sic] / <i>Italian Garden – looking up</i>. 	

Cat. no.	Image no.	Card no.; subject caption. • Descriptor code; description; notes	Number of issues by maker <i>Shaded</i> entries are reissues or pirates
Italian garden—Low view; terraces descending left to right; lake not visible			
242	I-197	Corner of terrace lawn, lower left. • Sf•Px•2d•Cft•—•? Sf•Yx•2d•Cft•—• Sf•Y#•2d•Cft•—•C . Holder: HNE. • Obliquely. Rectangular bed, center. Lakeside drive. Terraces with topiaries in distance, left. Plants in urns on & along lakeside balustrade, right. All of west steps visible in distance.	
Italian garden—Low views; terraces in distance, right, ascending left to right			
243	I-198	Round cushion-shaped conifer topiary, lower left. • Sf•Px•2d•Cft•—•C . Holder: BA. Ex Treadwell. • With small contrasting deciduous topiary emerging, top center. Dirt walk, right, curves prominently to front center of image. Thimble-shaped topiary; other topiaries. Part of curving walk, right. Prominent 5-tier topiary, center. Lakeside balustrade, far left. East terraces with massive hedge in distance, right. Bit of lake barely into image, left.	
244	I-199	Like 243, except camera closer. • Sf•P#•2d•Cft•—• Sf•Yx•2d•Cft•—• Sf•Y#•2d•Cft•—• . Holder: AAS. • No cushion topiary in lower left corner; and lake prominent in distance, left. Thimble-shaped topiary, left; two 2-tier conical topiaries either side. Deciduous shrubs & curving walk, right. 5-tier topiary, center. Bit of east terraces in distance, right. • Cropping varies. 2-section topiary, left foreground, sometimes only minimally visible.	
Italian garden—Other views			
245	I-201	Mushroom-shaped topiary, left. • Sf•P#•2d•Cft•—•? . Holder: AAS. • Walk. Steps right.	
246	I-202	Part of tapered topiary shrub, lower left corner. • Sc•Px•2d•Cft•—• . Holders: AAS, HNE. Illustrated: Emmet, p.89 (see sources ↑). • Bit of sharply curving walk, center. Part of low round topiary, right. Topiary tree with thimble-shaped base, 3 widely separated tiers above, left center. Part of curving lakeside drive & lakeside balustrade, mid-distance. Man (Seaver himself?) leaning against pedestal by opening in balustrade, right center. Boathouse with sharp reflection in distance, center. • Reissued or pirated as 23 (American Scenery); 77 (issuer unknown).	
247	I-200	View across lake from Wellesley College. • Sf•Y#•2d•Cft•—•? . Holder: HNE. • Foliage framing all 4 edges of image. • J. B. Fairbanks (Natick, Mass.) adhesive seller's stamp, perforated, on verso.	
248	I-203	View northwest. • Sf•P#•2d•Cft•—•? . Holder: AAS. • Topiaries, much of lake & far shore, right. Wide lens; distortion in 4-tier topiary, far right.	
Rockery area			
249	I-204	Corner of wide boulder, lower left corner. • Sf•Y#•2d•Cft•—• . Ex Treadwell. • Large boulders, center. Woody area. Man in vest, center. Indistinct lower rustic arbor. Rustic footbridge in distance, right.	
250	I-205	Lower rustic arbor. View through arbor. • Sf•P?•2s•Cft•—• Sf•Y?•2d•Cft•—• . • Part of dirt walk, left. Open, peaked-roof rustic gazebo with overgrown vines & 3 wooden steps. Part of rustic fence. Italian garden in distance through arbor. • Reissued by this maker as 262.	

Cat. no.	Image no.	Card no.; subject caption. • Descriptor code; description; notes	Number of issues by maker <i>Shaded</i> entries are reissues or pirates
251	I-206	Lower rustic arbor. View from inside. • Sf•Px•2s•Cft•— Sf•Y#•2d•Cft•—• Sf•Y#•2s•Cft•—•C. Holders: BA, HNE, NYPL. • Timbers framing image, left & right. Rustic fence. Receding rustic footbridge, left. Italian garden in distance. • Reissued or pirated as 78 (issuer unknown).	
252	I-207	Receding walk, far left. • Sf•P#•2d•Cft•—•—. Holder: AAS. • Low foliage (rhododendrons?), right. Man (Seaver?) from rear in boater-like hat, left center. Lower rustic arbor. Part of boathouse in distance, right.	
253	I-208	Receding walk, left. • Sf•Y#•2d•Cft•—•C. Holder: AAS. • Semi-tropical foliage on ground, right. Seat made of 2 stumps, far left. 2 large stacked boulders, left; other boulders. Upper rustic arbor barely visible in distance, center.	
254	I-209	Rustic footbridge over little ravine with boulders. • Sf•P#•2d•Cft•—•— Sf•Y#•2d•Cft•—•C. Holder: HNE. Illustrated: Luedke (see sources ↑). • Man (Seaver?) standing in boater-like hat, facing left, leaning on railing. Lower rustic arbor in distance, left. Lake in distance, right.	
255	I-210	Short curving rustic fence. • Sf•Y#•2d•Cft•—•—. Holder: HNE. • Boulders. Rustic footbridge, obliquely. Lower rustic arbor in distance, left. Lake in distance.	
256	I-211	Stepped dirt walk, ascending lower left corner to center. • Sf•Y#•2d•Cft•—•— Sf•Y#•2s•Cft•—•—, • Boulders along walk. Part of tea house in distance, upper left. Upper rustic arbor in distance, upper right.	
257	I-212	Tea house. • Sf•P?•2d•Cft•—•? Sf•Y#•2d•Cft•—•? Sf•Y#•2s•Cft•—•—, • Holder: HNE. Illustrated: Emmet, p.90 (see sources ↑). • Earlier called the <i>summer house</i> . Stripped tree trunk, left & right margins; and timber, top margin, all framing scene. Walk; lawn either side; small contorted beech, left; bench, right. Octagonal rustic gazebo with open window inside and rustic 3-tier cupola. • Sometimes marked <i>Seaver</i> only.	
258	I-213	Upper rustic arbor. • Sf•P#•2s•Cft•—•— Sf•Yx•2d•Cft•—•—. • Large boulders, left & center; primitive open rustic gazebo with open window inside & rustic 3-tier cupola; vertical slats partly obscured in wooded area. Can, drum, or pail resting on felled tree or stumps inside arbor.	
259	I-214	Wide tropical fronds. • Sf•Px•2d•Cft•—•— Sf•Yx•2d•Cft•—•C Sf•Y#•2d•Cft•—•—, Holder: HNE. • Man (Seaver?) in top hat, from rear, on rustic bridge. Lake & College Hall in distance.	

2. Charles Pollock reissues

5 issues

Of his own views. All taken by Seaver. Marked *The Tourist's* (or *Tourists'*) *Series* or *Home Series* on left; sometimes also *America Illustrated* on right. U.S. Library of Congress owns stereos by Seaver & Pollock, of which 46 are said to have maker's numbers—including these 2 views?

260 I-183 12. Italian Garden, near Boston.

- Sf•Y?•2d•Cft•Pt•—.
- Reissue of 228.

Cat. no.	Image no.	Card no.; subject caption. • Descriptor code; description; notes	Number of issues by maker <i>Shaded</i> entries are reissues or pirates
261	I-176	13. View in Italian Garden, near Boston. • Sf•Y?•2d•Cft•?•? • Reissue of 221. • Marked <i>The Tourists' [sic] Series. / America Illustrated.</i>	
262	I-205	14. Rustic Arbor, Italian Garden, near Boston. • Sf•Ys•2d•Cft•Pt•— • Reissue of 250. Two varieties seen: • Marked <i>The Tourists' Series.</i> & copyright notice on left; <i>America Illustrated.</i> on right. • Title but no card number. " <i>The Tourists [sic] Series.</i> " on left; copyright notice only on right.	
263	I-172	No card number. An Italian Garden, near Boston. • Sf•Ys•2d•Cft•—•— • Reissue of 217. • Marked <i>The Home Series. / America Illustrated.</i>	
264	I-178	No card number. View in Italian Garden, near Boston. • Sf•Ys•2d•Cft•—•— • Reissue of 223. • Marked <i>The Tourist's Series</i> only.	

Series of 1903 see Brown, E. M.
Singley, B. L. see Keystone View Co.

Smith, E. J.

Edgar J. Smith. Listed Sherborn, Mass., 1889–1898 (Polito, p.436). Hunnewell views made circa early or mid-1870s. Non-Hunnewell views are known dated 1870. No subject caption.

Both entries: Sf•Ol•2s•C?t•—•—. Holder: HNE.

Italian garden

265 I-215 **View east.**

• Balustrade. Hedge, cones, topiaries, top of balustrade, right.

266 I-216 **View toward lake.**

• Strange plant tops. Hedge. Distinct College Hall (completed 1875) in distance.

Standard Series see American Views

Stereoscopic Gems of American and Foreign Scenery see Graves, C. H.

Stereoscopic Treasures see Littleton View Co.

Sterro-Photo [sic] Co.

Dolgeville, New York. Active circa 1900. Some cards marked *Sold Only by Canvassers.*

Italian garden

267 I-217 **72. Wellesley College from Hunnewell's Wellesley [sic], Mass.**

• Sc•Gg•1d•Cft•Cft•—.

• Italian garden. Stone border of west walk. Woman, topiaries. Lake & College Hall in distance.

I-217 **Card variant.**

• Sc•Gg•1d•—•Cft•—. Holder: AAS.

• Maker's name & city scraped off. Same maker? Pirate reseller?

I-217 **Card variant. 72. Wellesley College from Hunnewell's Gardens, Wellesley, Mass.**

• S(c)•Gg•1d•—•Cft•—.

• No maker's name. Same maker?

Cat. no.	Image no.	Card no.; subject caption. • Descriptor code; description; notes	Number of issues by maker <i>Shaded</i> entries are reissues or pirates
268	I-218	74. Hunnewell's Italian Gardens. Wellesley, Mass. • Sc•Gg•1d•Cft•Cft•- . • Part of west walk curbing wall, lower right corner. Topiaries. Viewing pavilion in upper right distance. • Illustrated in catalog intro ↑.	
	I-218	• Sc•Gg•1d•-•Cft•- . • Typeset floral motif in place of maker's name & city. Same maker?	
269	I-219	855. Lovers' Paradise, Hunnewell's Gardens. Wellesley, Mass. • Sc•Gg•1d•Cft•Cft•- Sc•Gg•1d•Cft•?•C. • Italian garden. Top of shrub; plants in 3 urns. Receding west walk. Topiaries. Woman seated on stone curbing. Bit of lake in distance, center. • Reissued or pirated as 92 (Co-Operative).	
	I-219	Card variant. • S(c)•?•1d•-•-•- . Holder: AAS; HNE. Illustrated: Emmet, p.88 (see sources ↑). • Typeset floral motif in place of maker's name & city. Same maker?	
270	I-220	3-digit card number, illegible. Hunnewell's Grounds, Wellesley, Mass. • Sc•B?•1d•Cft•Pt•? . • Reissue or pirate of 271 (Strohmeyer & Wyman).	

Strohmeyer & Wyman

Henry Albert Strohmeyer, Sr. (1858–1943) and N. Dewitt Wyman (?–?), New York City. Active circa early 1890s. Marked *Strohmeyer & Wyman* and *Underwood & Underwood*.

271	I-220	Hunnewell's Grounds, Wellesley, Mass. • Sc•Bb•1d•Cft•Cft•- . • 3 persons in canoe on lake. Italian garden & viewing pavilion in distance. • Reissued or pirated as 270 (Sterro-Photo); 274 (Underwood).	
-----	-------	--	--

Subscription Series see American Scenery Co.

Sun Sculpture Trade Mark see Underwood & Underwood

Tourist's (and Tourists') Series, The see Seaver, Chandler, Jr.

Underwood & Underwood

6 issues

Brothers Elmer Judson Underwood (1859–1947) and Bert Elias Underwood (1862–1943), New York City. Active 1890s. Supplanted Kilburn, and in turn supplanted by Keystone, as the largest U.S. stereo maker. Some cards marked *Underwood & Underwood* primary and *J. F. Jarvis, Strohmeyer & Wyman, or R. Y. Young*, secondary. See also these names individually ↑. Waldsmith, p.41 says Underwood & Underwood bought out Jarvis's business, 1897. Some cards also marked *Sun Sculpture Trade Mark*. Some marked *Copyright, 1894*. See also Littleton View Co. Occasionally hand-colored.

—	—	5254. Non-Hunnewell subject.	
Italian garden			
272	I-70	5256. No subject caption. • Sc•Gg•2d•Cft•-•? . • Reissue of 113 (Jarvis).	
273	I-67.1	5257. Also known without card number. The Artist's Dream, Hunnewell's Grounds, Wellesley, Mass., U.S.A. • Sc•Gg•2d•Cft•Cft•C. Holders: BA, HNE, NMAH (glass negative), NYPL, UCR. Ex Treadwell. • Reissue of 110 (Jarvis).	
—	—	5259. Non-Hunnewell subject.	

Cat. no.	Image no.	Card no.; subject caption. • Descriptor code; description; notes	Number of issues by maker <i>Shaded</i> entries are reissues or pirates
----------	-----------	---	--

274	I-220	Hunnewell's Grounds, Wellesley, Mass. • S(c)•Bb•1d•Cft•Cft- . • Reissue of 271 (Strohmeyer & Wyman). Slight curve in card seems manufactured, not acquired. • Caption reiterated in foreign language.	
275	I-227	Hunnewell's Grounds Wellesley Mass. U.S.A. 2. [sic] • Sc•Bb•1d•Cft•Cft- . • Reissue of 284 (Young).	
276		A Poem in Trees, Hunnewell's Grounds, Boston, [sic] (Wellesley) Mass., U.S.A. <i>Also known without caption.</i> I-68.1 • Reissue of 111 (I-68.1) (Jarvis). I-68.2 • Reissue of 111 (I-68.2) (Jarvis). I-68.3 • Sc•Bb•2d•Cft•Cft•C Sc•Gg•2d•Cft•Cft? . Holder: AAS. Reissue of 111 (I-68.3) (Jarvis). I-68.4 • Sc•Gg•2d•Cft-•- . Holder: Worcester (Mass.) Art Museum. • Presume reissue of 106 (Jarvis). Sister of I-68.3. Woman, lower left corner, reaching out to topiary, not looking at camera. Child with cap lower right corner, looking down. Woman on lakeside path absent.	
277	I-71.1	Wellesley College from Hunnewell's Gardens, Massachusetts, U.S.A. • Sc•Gg•2d•Cft-•? . Holder: NYPL. • Reissue of 114 (Jarvis). No woman or child.	
	I-71.2	Image variant. • Sc•Gg•2d•Cft-•- . Holder: HNE. Illustrated: Emmet, p.93 (see sources ↑). • Like I.70.1, except shadows. Woman & child, with no space between them; child's cape blown up by wind. • Copyright 1894.	
	I-71.3	No subject caption. • Sc•Gg•2d•Cft-•- . • Woman & child huddled together, left of center, bottom. Space between them. Child's white cape hanging down.	

Universal Photo Art Co. and *Universal Series* see Graves, C. H.
 Universal Stereoscopic View Co. see Berry, B. W.
 Universal View Co. see Rau, William H.
Wellesley College see Lewis, Thomas

White, H. C.
 Hawley Castle White (1848–1925), North Bennington, Vermont. Possibly acquired by, or affiliated with, Underwood & Underwood. Marked *White* and "*Perfec*" *Stereograph*. Marked *Patented April 14, 1903* and *Copyright 1906*, the latest-dated known original-issue period stereo views of a Hunnewell subject.

Italian garden			6 issues
278	I-221	12832. Here beauty dwells among the evergreens, Hunnewell grounds, Wellesley, Mass., U.S.A. • Sc•Gg•2d•Cft•Cft- Sc•Gx•2d•Cft•Cft- . Holders: AAS, NMAH (glass negative & glass interpositive), UCR (glass negative). • Different image than 281 and 282. • Corner of east topiary hedge, lower left. Large conical topiary, left. Other topiaries in sunlight, in profusion. Boathouse gone (removed 1903). <i>Topiary ruins</i> hedge & metal hoops in distance, left.	

Cat. no.	Image no.	Card no.; subject caption. • Descriptor code; description; notes	Number of issues by maker <i>Shaded</i> entries are reissues or pirates
----------	-----------	---	--

279	I-222	12833. “By the placid lake the road winds round.”—Hunnewell grounds, Wellesley, Mass., U.S.A. • Sc•Gg•2d•Cft•Cft•– . • Holders: AAS, NMAH (glass negative & glass interpositive), UCR (glass negative). • Also known numbered <i>12833 (99)</i> [sic]. • View along lakeside balustrade; Italian garden beyond. Woman in large fancy wide hat. Viewing pavilion. Opening in lakeside balustrade.	
280	I-223	12834. A glimpse of the Lake from lovely Hunnewell’s Grounds, Wellesley, Mass. • Sc•Gg•2d•Cft•Cft•– . Holders: NMAH (glass interpositive), LC, UCR (glass negative). • 2 topiary shrubs, left & right foreground. Path; man from back in suit & hat. Canopy tree prominent, center. Profusion of topiary trees, descending.	
—	—	12835. Non-Hunnewell subject.	
281	I-224	No card number. Here beauty dwells among the evergreens, Hunnewell grounds, Wellesley. • Holder: NMAH (glass negative. Ever published?) • Foliage blocks most of image. A few topiaries, lakeside path & balustrade, & lake through opening.	
282	I-225	No card number. Here beauty dwells among the evergreens, Hunnewell grounds, Wellesley. • Holder: NMAH (glass negative. Ever published?) • Flat top of east topiary hedge, bottom. Topiary trees, many conical, in profusion. Isolated white pine breaking horizon in center (left image) and left of center (right image), fatally struck by lightning, 2009.	
283	I-226	No card number or subject caption. • Holder: NMAH (glass negative. Ever published?) • Upper part of large, slender, tapered topiary conifer tree prominent against sky. Part of another, left margin. Top of another, right. Bit of lake & far shore in distance, bottom.	

World Illustrated, The see American Scenery Co.

Young, R. Y., American Stereoscopic Co.
Roddo York Young (1871–1955), New York City. Active circa 1896 on. Acquired by or affiliated with Underwood & Underwood. Sometimes also marked *R. Y. Young*.

Italian garden			
284	I-227	Hunnewell’s Grounds, Wellesley, Mass., U. S. A. • Sc•Bb•1s•Cft•Cft•B . • Marked <i>American Stereoscopic Co.</i> only. No copyright notice. • Top of tall multi-tiered topiary, with five (in some croppings parts of a sixth too) tiers visible, right margin. Tops of other topiaries. Scattered topiaries, left. Two couples at lakeside balustrade, lower right corner. Lake; boathouse reflected in water. • Reissued as 275 (Underwood).	
285	I-228	View in Hunnewell’s Grounds, Wellesley, Mass. • Sc•Bb•1d•Cft•Cft•C Sc•Gg•2d•Cft•Cft•– . • Holders: LC, NMAH (glass negatives; each half of stereo pair separately cataloged). • Marked <i>R. Y. Young, American Stereoscopic Co., and Copyright 1901</i> . • Topiaries in profusion, ascending right to left. Boathouse; not reflected in water.	

Youth’s Companion see Mason, Perry & Co.