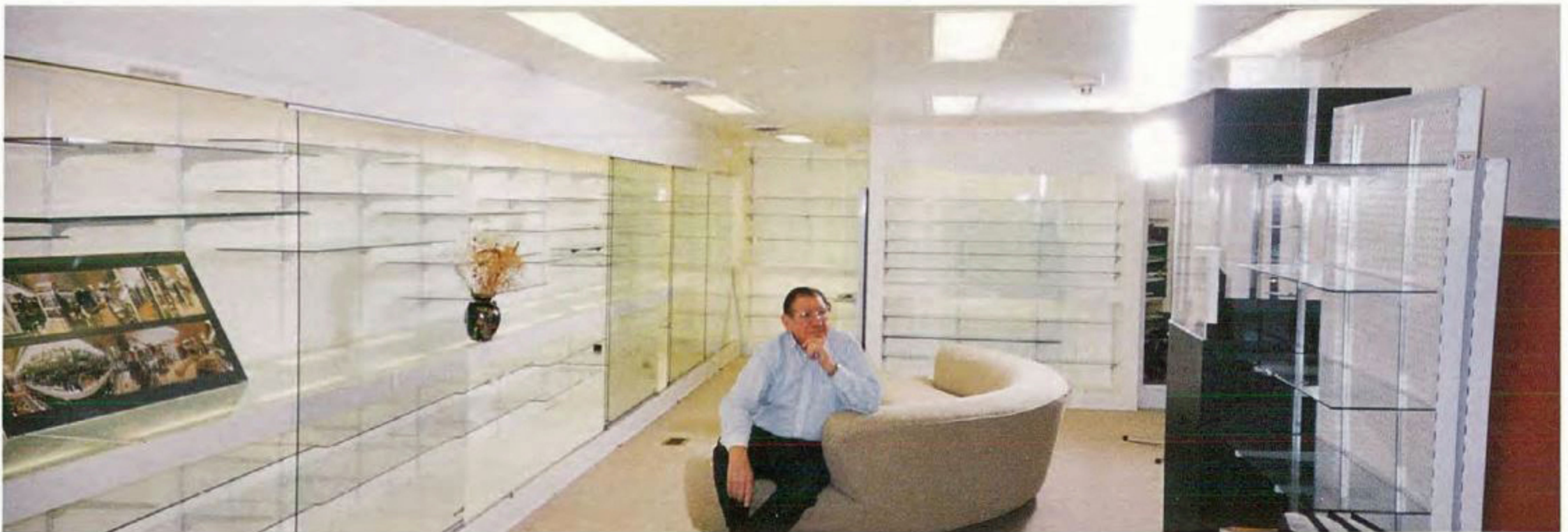


## The NAYLOR COLLECTION - Before and After



Harold Lewis photo



Jeanne Mahoney photo

*Top: The Collection displayed in the museum under the Naylor home*

*Bottom: The main room of the museum after the contents had been packed for shipment to Japan. The museum held 1/3 mile of glass shelving.*

*Statistics: Physical inventory and preparation for packing - 8 weeks; Packing by Fine Arts Express observed by representatives of Japan and Jack Naylor - 6 weeks; 76 wood crates, gross weight 30 tons, transported to Japan by JAL air freighter.*